



Thermostat T23 Series



3A-PF2



3A-CF2

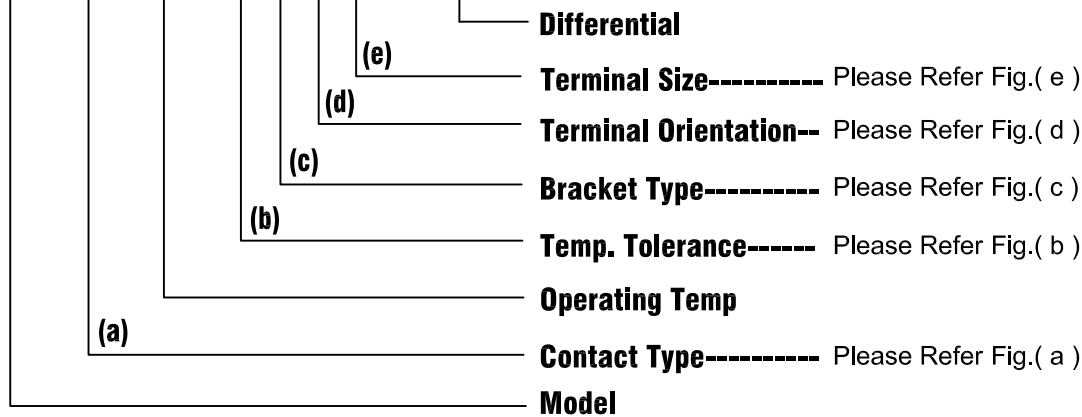
SPECIFICATION

- Electrical Rating : 15A 125V AC (Resistive Load)
10A 250V AC (Resistive Load)
16A 250V AC (Resistive Load)
- Operating Temp : 50 ~ 175°C (UL.CUL 205°C)
- Differential : 10~30K (15K Standard)
- Temp. Tolerance : Operating Temp.±3K±5K
- Heat Durability : 220°C Max. (PPS)
- Circuit Resistance : 50mΩ Max.
- Insulation Resistance : 100MΩ Min.at DC500V
- Dielectric Strength : AC 1000V for One Minute.
or AC 1800V for One Second.
- Operating Life : 100000 Cycles (15A 125V/10A 250V AC)
10000 Cycles (16A 250V AC)
- Weight:4.6g max.

HOW TO ORDER

MODEL CODE (FULL CODE)

T23 A 1 1 0 B C F 2 - 1 5

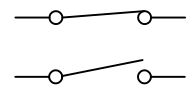


(a) CONTACT TYPE :

A = Contact Opens When Temperature Rises to Set Point (Normally Closed)

B = Contact Closes When Temperature Rises to Set Point (Normally Open)

M = Manual Reset



(b) TEMP. TOLERANCE : (*=STANDARD)

Grade	A	*B
Action ± °C	3	5
Reset ± °C	4	8

• The Grade of Temp. Tolerance is "A", When The Operating Temp. is Less Than 105°C.

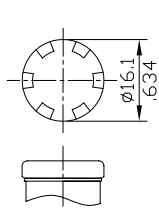
• The Grade of Temp. Tolerance is "B", When The Operating Temp. is Over 106°C.



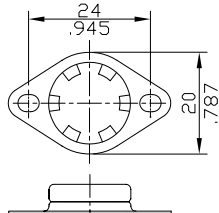
(c) BRACKET TYPE :

● **FIXED BRACKET**

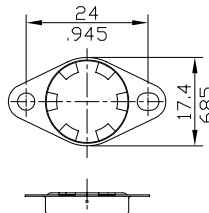
* STAINLESS STEEL CAP : D TYPE



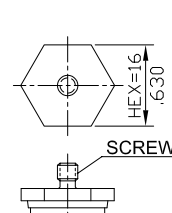
C TYPE



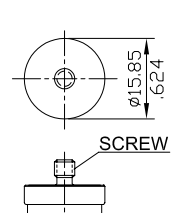
B TYPE



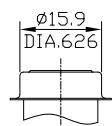
X TYPE



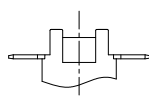
H TYPE



R TYPE



*** D TYPE**



**P TYPE
(4 POSTS SHELL)**

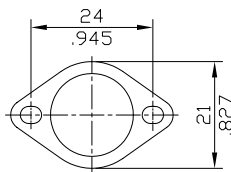
SCREW TYPE : M4x0.7 L:6mm (STD)
M5x0.8 L:6mm (STD)
#6-32UNC
#8-32UNC

mm
inch

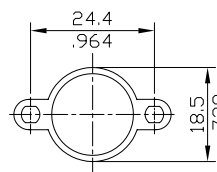
One Shot is suitable for all shapes above.

● **LOOSE BRACKET**

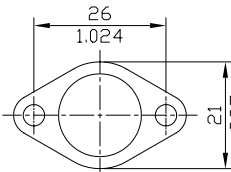
* STAINLESS STEEL CAP : U TYPE



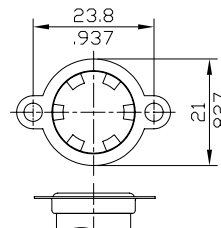
O TYPE



*** U TYPE**

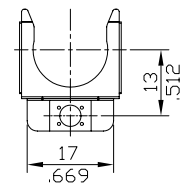


M TYPE



S TYPE

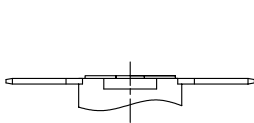
(ONE WING)



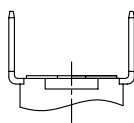
**G TYPE
(Screw or Spot Available)**

mm
inch

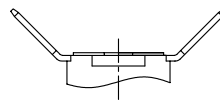
(d) TERMINAL ORIENTATION:



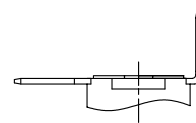
**F TYPE
(0°)**



**R TYPE
(90°)**

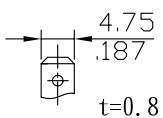


**T TYPE
(45°)**



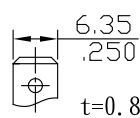
**L TYPE
(90° X 1)**

(e) TERMINAL SIZE:



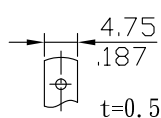
TYPE 1

Amp #187 TAB



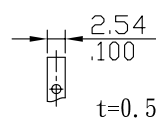
TYPE 2

Amp #250 TAB



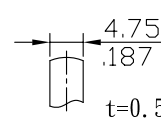
TYPE 3

SOLDER TAB



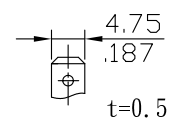
TYPE 4

DIP TAB



TYPE 6

WELD TAB



TYPE 7

Amp #187 TAB

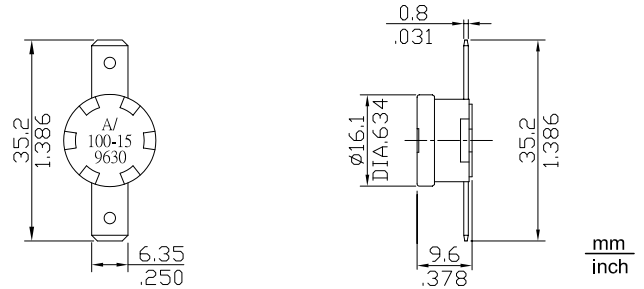
mm
inch



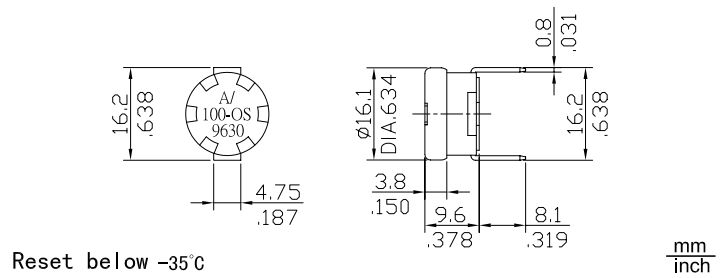
Thermostat T23 Series



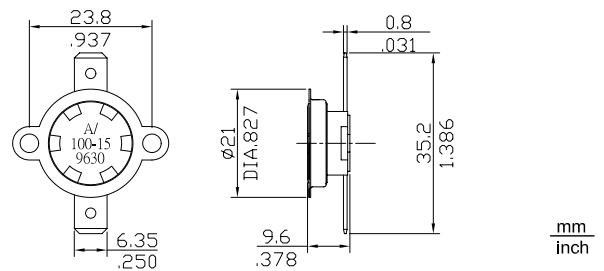
3A-CF2



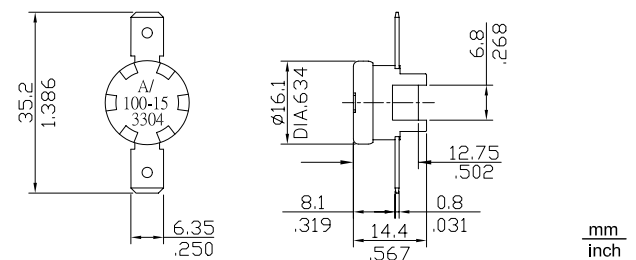
3A-CR1-OS(ONE SHOT)



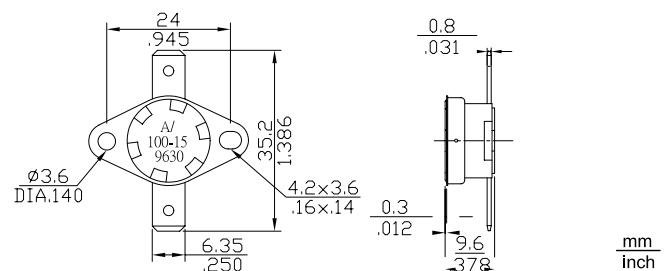
3A-SF2(LOOSE BRACKET)



3A-PF2(4-POST)



3A-XF2(FIX BRACKET)

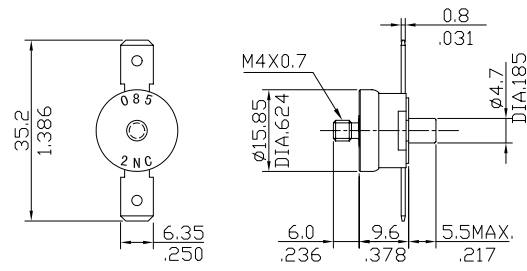




Thermostat T23 Series

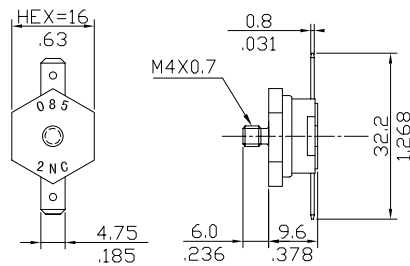


3M-RF2



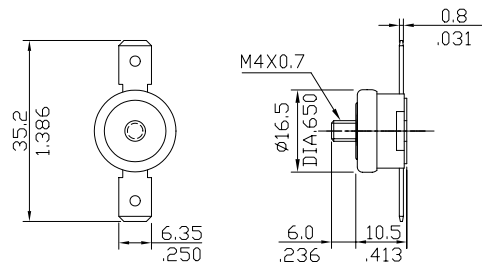
mm
inch

3A-HF1



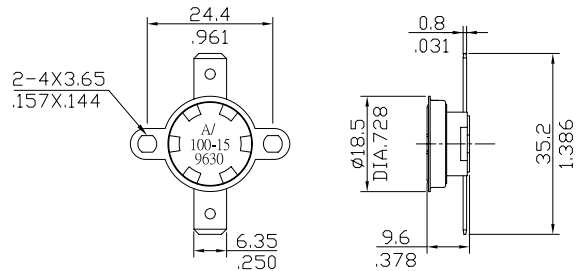
mm
inch

3A-RF2-A



mm
inch

3A-SF2-U

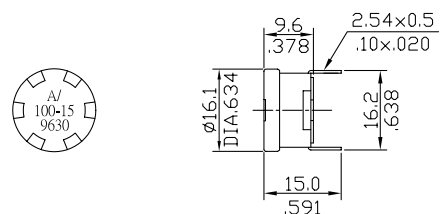


mm
inch

3A-CR4



(FOR PCB)



mm
inch