



Tact Switches TS Series

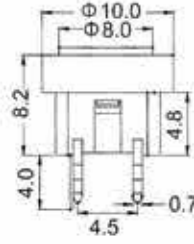
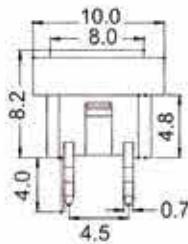
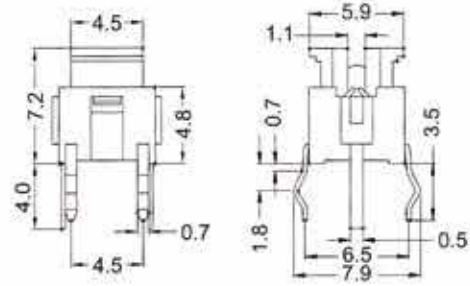
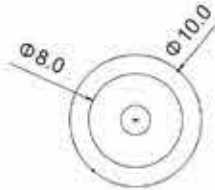
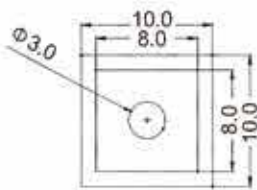


Specification :

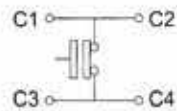
- ◆ Rating: 12 VDC 50mA
- ◆ Operating Force: 200gf ± 50gf
- ◆ Life: 100,000 Cycles Min
- ◆ Total Travel: 0.25mm ± 0.1mm
- ◆ Contact Resistance: 100m Ohms Max (Initial)
- ◆ Insulation Resistance: 100M Ohms Min (At 250 VDC)
- ◆ Dielectric Withstanding Voltage: 250 VAC For 1 Minute
- ◆ Operating Temperature:- -20°C ~ +70°C
- ◆ Ambient Humidity: 75%RH Max
- ◆ Malfunction Durability: 10 to 55 Hz 0.75mm Double Amplitude During 2 Hours
- ◆ Solder Ability: Solder Bath: 260°C Max 3 Seconds
Hand Soldering: 260°C Max 3 Seconds

Material :

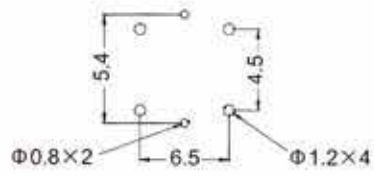
| | |
|---------------|-------------------|
| Terminal | Brass Plated Ag |
| Housing | Nylon 66 |
| Movable Blade | SUS 301 Plated Au |
| Bottom | PBT |
| Cap | ABS |
| Switch Body | Nylon 66 |



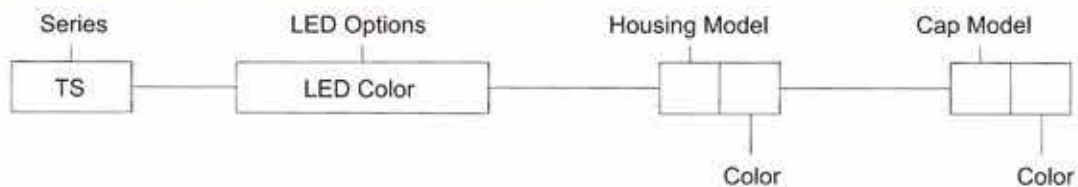
Circuit Diagram



P.C.B. Mounting Hole Dimensions



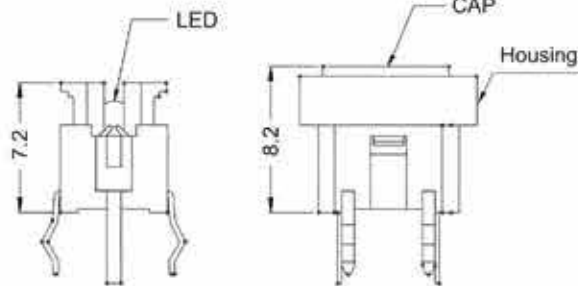
How To Order





Tact Switches TS Series

Ordering Information ▶▶ LED Color Options



| Code | LED Color | |
|------|-------------|--|
| 1 | Red | |
| 2 | Green | |
| 3 | Orange | |
| 7 | Blue | |
| 8 | White | |
| 0 | Without LED | |

Ordering Information ▶▶ Housing Model & Color

| Code | Housing Model |
|------|-----------------|
| A | |
| B | |
| C | Without Housing |

| Code | Color | |
|------|-----------------|--|
| 5 | Gray | |
| 6 | Black | |
| 0 | Without Housing | |

Ordering Information ▶▶ CAP Model & Color

| Code | CAP Model |
|------|-------------|
| A | Without LED |
| B | With LED |
| C | Without LED |
| D | With LED |
| E | Without CAP |

| Code | Color | |
|------|-------------|--|
| 1 | Red | |
| 2 | Green | |
| 3 | Orange | |
| 4 | Ivory | |
| 5 | Gray | |
| 6 | Black | |
| 0 | Without CAP | |