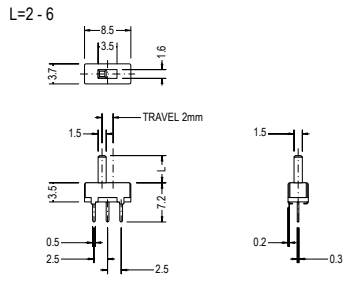


*Slide Switch SS Series*

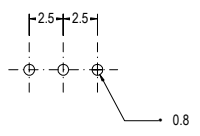
**SS12D01**



**SPECIFICATION**

- Circuit : ON-ON(1P2T)
- Rating : D.C. 50V 0.3A
- Timing : Non Shorting

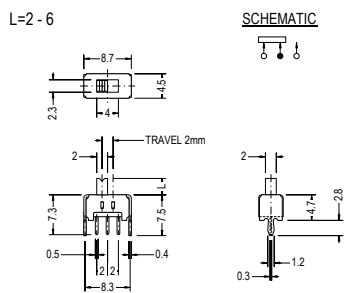
P.C.B. HOLE DETAIL



**SS12D02**



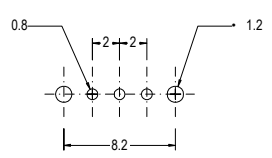
(SS-201A-12)



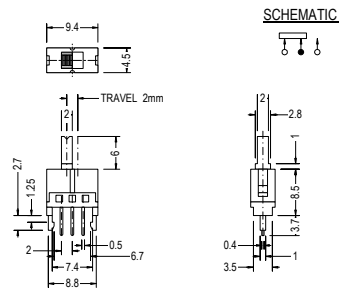
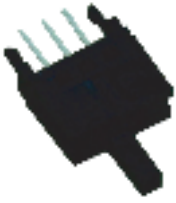
**SPECIFICATION**

- Circuit : ON-ON(1P2T)
- Rating : D.C. 50V 0.3A
- Timing : Non Shorting

P.C.B. HOLE DETAIL



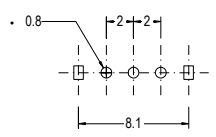
**SS12D18**



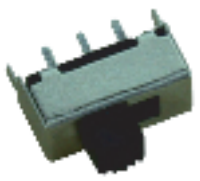
**SPECIFICATION**

- Circuit : ON-ON(1P2T)
- Rating : D.C. 50V 0.3A
- Timing : Non Shorting

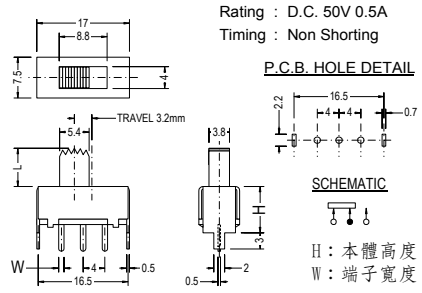
P.C.B. HOLE DETAIL



**SS12F02**



ON-ON(1P2T)

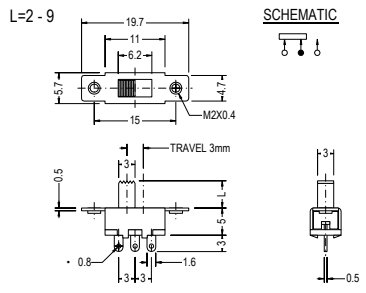


開關型號	高度(H)	端子(W)
SS-12F02	8.5	1
SS-12F03	8	1
SS-12F04	11	0.9
SS-12F07	14	0.9
SS-12F08	14	1.3
SS-12F09	18	1.3
SS-12F18	12	1.3
SS-12F25	21	1.3

**SS12F16**



(SS-001B)



**SPECIFICATION**

- Circuit : ON-ON ( 1P2T )
- Rating : D.C. 50V 0.5A
- Contact R.[max] : D.C. 5V 1A 30m
- Insulation R.[min] : D.C. 500V 100M
- Withstand VOL. : A.C. 500V 1minute
- Operating force : 300 100g
- Timing : Non Shorting
- Life cycle[max] : 10,000 CYCLES