

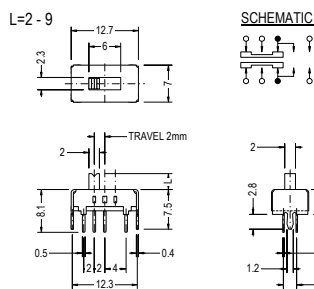


### Slide Switch SS Series

#### SS23D06



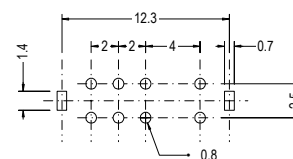
(SS-201B-23)



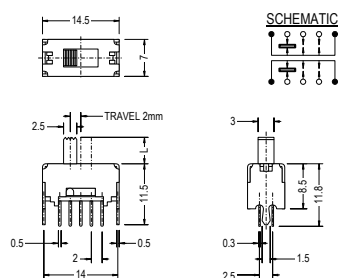
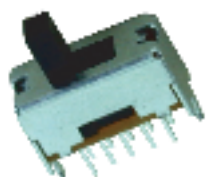
#### SPECIFICATION

- Circuit : ON-ON-ON(2P3T)
- Rating : D.C. 50V 0.3A
- Timing : Shorting

#### P.C.B. HOLE DETAIL



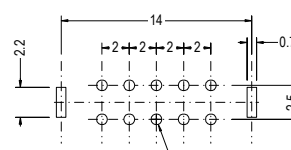
#### SS23D28



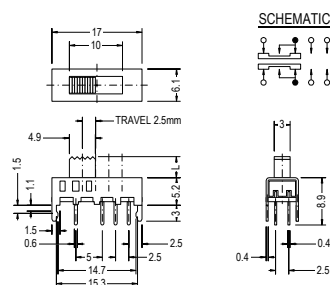
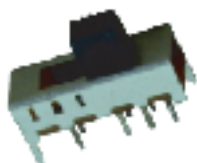
#### SPECIFICATION

- Circuit : ON-ON-ON(2P3T)
- Rating : D.C. 50V 0.3A
- Timing : Non Shorting

#### P.C.B. HOLE DETAIL



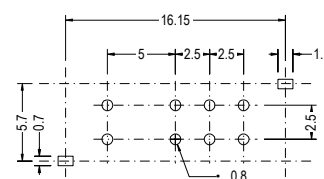
#### SS23E05



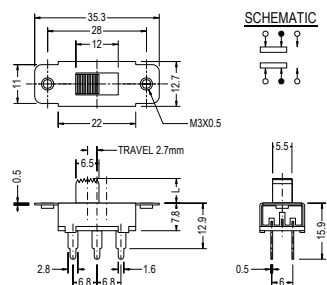
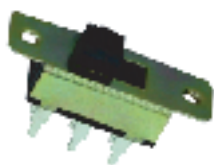
#### SPECIFICATION

- Circuit : ON-ON-ON(2P3T)
- Rating : D.C. 50V 0.3A
- Timing : Shorting

#### P.C.B. HOLE DETAIL



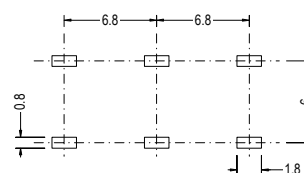
#### SS23E09



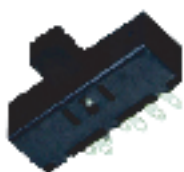
#### SPECIFICATION

- Circuit : ON-OFF-ON(2P3T)
- Rating : A.C. 250V 1.5A
- Timing : Non Shorting

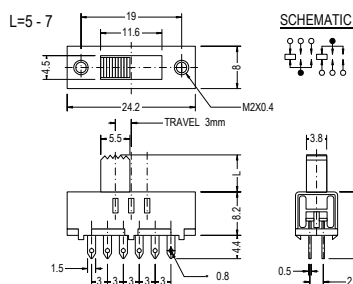
#### P.C.B. HOLE DETAIL



#### SS23F20



(SS-207)



#### SPECIFICATION

- Circuit : ON-ON-ON ( 2P3T )
- Rating : D.C. 50V 0.5A
- Contact R.[max] : D.C. 5V 1A 30m
- Insulation R.[min] : D.C. 500V 100M
- Withstand VOL. : A.C. 500V 1minute
- Operating force : 300 100g
- Timing : Shorting
- Life cycle[max] : 10,000 CYCLES