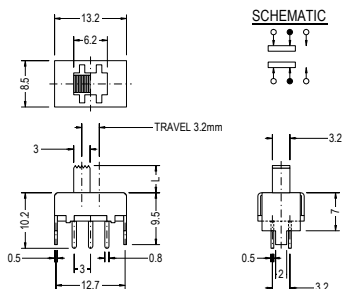


Slide Switch SS Series

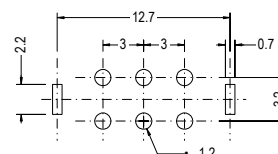
SS22F03



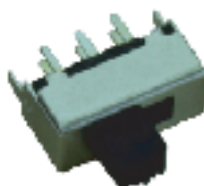
SPECIFICATION

- Circuit : ON-ON(2P2T)
- Rating : D.C. 50V 0.5A
- Timing : Non Shorting

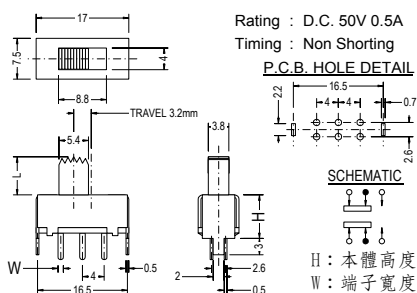
P.C.B. HOLE DETAIL



SS22F06

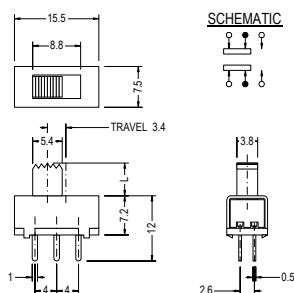


ON-ON(2P2T)



開關型號	高度(H)	端子(W)
SS-22F06	8	1.0
SS-22F07	8.5	1.0
SS-22F08	10	1.0
SS-22F10	9.5	1.0
SS-22F17	14	1.3
SS-22F18	14	0.9
SS-22F20	18	1.3
SS-22F22	21	1.3
SS-22F48	12	1.3
SS-22F50	11	1.3
SS-22F54	14	1.3

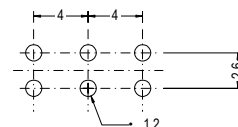
SS22F15



SPECIFICATION

- Circuit : ON-ON(2P2T)
- Rating : D.C. 50V 0.5A
- Timing : Non Shorting

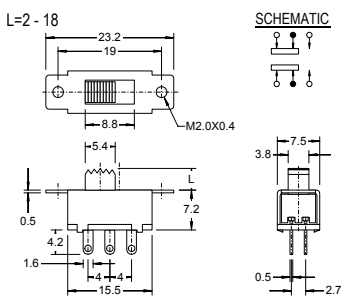
P.C.B. HOLE DETAIL



SS22F39



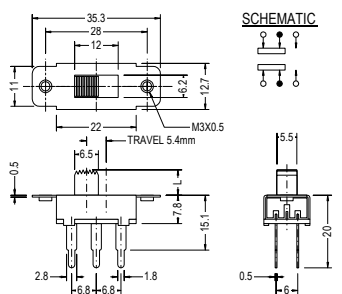
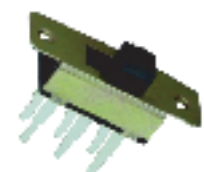
(SS-003-22)



SPECIFICATION

- Circuit : ON-ON (2P2T)
- Rating : D.C. 50V 0.5A
- Contact R.[max] : D.C. 5V 1A 30m
- Insulation R.[min]: D.C. 500V 100M
- Withstand VOL. : A.C. 500V 1minute
- Operating force : 300 100g
- Timing : Non Shorting
- Life cycle[max] : 10,000 CYCLES

SS22K31



SPECIFICATION

- Circuit : ON-ON(2P2T)
- Rating : A.C. 250V 1.5A
- Timing : Non Shorting

P.C.B. HOLE DETAIL

