



Verification Report (supplementary)

No.: GZ0910098749/CHEM

Date: OCT 29, 2009

Page 1 of 6

LIGHT COUNTRY CO., LTD
NO.30 DALING STR., JIAO YI TANG INDUSTRIAL ZONE, TANGXIA TOWN, DONG GUAN CITY, GUANGDONG
PROVINCE, CHINA.

This report is to supersede Verification report GZ0909083854/CHEM.

Sample Description : SWITCH
SGS Ref No. : GZ12136658EC-25.5
Model No. (P.O No.) : NR4 ROCKER SWITCH (NON-LIT)
Verification Period : SEP 08, 2009 TO SEP 29, 2009
Verification Requested :With reference to RoHS Directive 2002/95/EC, and its amendment directives
Verification Method

1. Review was performed for the samples disjointed from the submitted articles and the related test reports submitted by the Applicant
2. Tests was performed for the samples indicated by the photos in the report with test methods reference to IEC 62321:2008: Procedures for the Determination of Levels of Six Regulated substances in Electrotechnical Products
(1) Screening by XRF Spectroscopy

Verification Results : Please refer to next page
Verification Conclusion : Based on the review of previous reports and verification results of the submitted samples, the results **comply with** the RoHS Directive 2002/95/EC and its subsequent amendments.
Remark : According to declaration from client, the materials of other parts in model NR4 ROCKER SWITCH (NON-LIT) are the same as those in model RC9 ROCKER SWITCH (LIT) (data and photos are shown on report GZ0909083850/CHEM)

Signed for and on behalf of
SGS-CSTC Ltd.

Shining Deng
Sr. Engineer

This document is issued by the Company under its General Conditions of Service printed overleaf or available on request and accessible at http://www.sgs.com/terms_and_conditions.htm. Attention is drawn to the limitation of liability, indemnification and jurisdiction issues defined therein. Any holder of this document is advised that information contained hereon reflects the Company's findings at the time of its intervention only and within the limits of Client's instructions, if any. The Company's sole responsibility is to its Client and this document does not constitute parties to a transaction from exercising all their rights and obligations under the transaction documents. Any unauthorized alteration, forgery or falsification of the content or appearance of this document is unlawful and offenders may be prosecuted to the fullest extent of the law.
Unless otherwise stated the results shown in this test report refer only to the sample(s) tested. This document cannot be reproduced except in full, without prior approval of the Company.



SGS-CSTC Standards Technical Services Co., Ltd.
Guangzhou Environmental and Analytical Chemistry Laboratory

130 Kazhu Road, Sointech Park, Guangzhou Economic & Technology Development District, Guangzhou, China 510663 | (86-20) 82155555 | (86-20) 82075125 | www.cn.sgs.com
中国·广州·经济技术开发区科学城科珠路198号 邮编: 510663 | (86-20) 82155555 | (86-20) 82075125 | e sgs.china@sgs.com

Member of the SGS Group (SGS SA)

Details on Verification

Part No.	Part Name	Restricted Substances	Results of EDXRF ⁽¹⁾	No. of Related Test Report	Results in Related Test Report(mg/kg)	Result of Wet Chemical Testing ⁽²⁾ (mg/kg)	Conclusion on RoHS	Sample Submitted / Resubmitted Date
1	Black plastic shell	Cd	BL	\	\	\	Comply	Sep 08, 2009
		Pb	BL		\	\	Comply	
		Hg	BL		\	\	Comply	
		Cr ⁶⁺	BL		\	\	Comply	
		PBBs	BL		\	\	Comply	
		PBDEs ^{##}			\	\	Comply	
2	Black plastic (button) (on No.1)	Cd	BL	\	\	\	Comply	Sep 08, 2009
		Pb	BL		\	\	Comply	
		Hg	BL		\	\	Comply	
		Cr ⁶⁺	BL		\	\	Comply	
		PBBs	BL		\	\	Comply	
		PBDEs ^{##}			\	\	Comply	
3	Silvery metal spring (in No.2)	Cd	BL	\	\	\	Comply	Sep 08, 2009
		Pb	BL		\	\	Comply	
		Hg	BL		\	\	Comply	
		Cr ⁶⁺	BL		\	\	Comply	
		PBBs	---		\	\	\	
		PBDEs ^{##}			\	\	\	
4	Silvery metal pin (thick)	Cd	BL	\	\	\	Comply	Sep 08, 2009
		Pb	BL		\	\	Comply	
		Hg	BL		\	\	Comply	
		Cr ⁶⁺	BL		\	\	Comply	
		PBBs	---		\	\	\	
		PBDEs ^{##}			\	\	\	
5	Silvery metal sheet	Cd	BL	\	\	\	Comply	Sep 08, 2009
		Pb	BL		\	\	Comply	
		Hg	BL		\	\	Comply	
		Cr ⁶⁺	BL		\	\	Comply	
		PBBs	---		\	\	\	
		PBDEs ^{##}			\	\	\	

This document is issued by the Company under its General Conditions of Service printed overleaf or available on request and accessible at http://www.sgs.com/terms_and_conditions.htm. Attention is drawn to the limitation of liability, indemnification and jurisdiction issues defined therein. Any holder of this document is advised that information contained hereon reflects the Company's findings at the time of its intervention only and within the limits of Client's instructions, if any. The Company's sole responsibility is to its Client and this document does not exonerate parties to a transaction from exercising all their rights and obligations under the transaction documents. Any unauthorized alteration, forgery or falsification of the content or appearance of this document is unlawful and offenders may be prosecuted to the fullest extent of the law. Unless otherwise stated, the results shown in this test report refer only to the sample(s) tested. This document cannot be reproduced except in full, without prior approval of the Company.



Remark

- (1) (a) It is the result on total Br while test item on restricted substances is PBBs/PBDEs. It is the result on total Cr while test item on restricted substances is Cr⁶⁺.
- (b) Results are obtained by EDXRF for primary screening, and further chemical testing by ICP (for Cd, Pb, Hg), UV-VIS (for CrVI) and GCMSD (for PBBs, PBDEs) is recommended to be performed, if the concentration exceeds the below warning value according to IEC 62321:2008 (unit: mg/kg)

Element	Polymer	Metal	Composite Materials
Cd	BL ≤ (70-3σ) < X < (130+3σ) ≤ OL	BL ≤ (70-3σ) < X < (130+3σ) ≤ OL	LOD < X < (150+3σ) ≤ OL
Pb	BL ≤ (700-3σ) < X < (1300+3σ) ≤ OL	BL ≤ (700-3σ) < X < (1300+3σ) ≤ OL	BL ≤ (500-3σ) < X < (1500+3σ) ≤ OL
Hg	BL ≤ (700-3σ) < X < (1300+3σ) ≤ OL	BL ≤ (700-3σ) < X < (1300+3σ) ≤ OL	BL ≤ (500-3σ) < X < (1500+3σ) ≤ OL
Br	BL ≤ (300-3σ) < X	---	BL ≤ (250-3σ) < X
Cr	BL ≤ (700-3σ) < X	BL ≤ (700-3σ) < X	BL ≤ (500-3σ) < X

(c) OL = Over Limit, BL = Below Limit, IN = Inconclusive, LOD = Limit of Detection

(d) The XRF screening test for RoHS elements – The reading may be different to the actual content in the sample be of non-uniformity composition

- (2) (a) mg/kg = ppm=0.0001%, N.D. = not detected (<MDL), --- = not conducted, \ = not available.
- (b) Unit and Method Detection Limit (MDL) in wet chemical test

Test Items	Pb	Cd	Hg
Units	mg/kg	mg/kg	mg/kg
MDL	2	2	2

The MDL for single compound of PBBs & PBDEs is 5 mg/kg and MDL of Cr⁶⁺ for polymer & composite sample is 2 mg/kg.

- (c) According to IEC 62321:2008, result on Cr⁶⁺ for metal sample is shown as Positive/Negative. Negative = Absence of Cr⁶⁺ coating, Positive = Presence of Cr⁶⁺ coating.
Storage conditions and production date of the tested sample are unavailable and thus results of Cr(VI) represent status of the sample at the time of testing.
- (d) ## = The exemption of DecaBDE in polymeric application according 2005/717/EC was overruled by the European Court of Justice by its decision of 01.04.2008. Subsequently DecaBDE is included in the sum of PBDE after 01.07.2008

- (3) Results & photo(s) of No.4 & No.5 refer to Verification report GZ0909083850/CHEM No.3 & No.9.

This document is issued by the Company under its General Conditions of Service printed overleaf or available on request and accessible at http://www.sgs.com/terms_and_conditions.htm. Attention is drawn to the limitation of liability, indemnification and jurisdiction issues defined therein. Any holder of this document is advised that information contained hereon reflects the Company's findings at the time of its intervention only and within the limits of Client's instructions, if any. The Company's sole responsibility is to its Client and this document does not constitute parties to a transaction from exercising all their rights and obligations under the transaction documents. Any unauthorized alteration, forgery or falsification of the content or appearance of this document is unlawful and offenders may be prosecuted to the fullest extent of the law.
Unless otherwise stated, the results shown in this test report refer only to the sample(s) tested. This document cannot be reproduced except in full, without prior approval of the Company.



Photo for original product



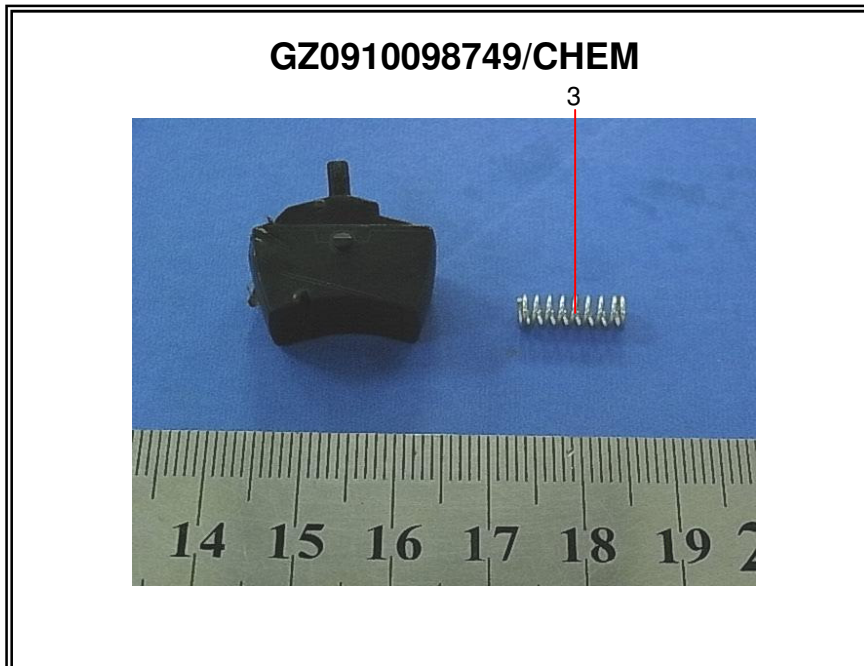
Photo for supplementary product



This document is issued by the Company under its General Conditions of Service printed overleaf or available on request and accessible at http://www.sgs.com/terms_and_conditions.htm. Attention is drawn to the limitation of liability, indemnification and jurisdiction issues defined therein. Any holder of this document is advised that information contained herein reflects the Company's findings at the time of its intervention only and within the limits of Client's instructions, if any. The Company's sole responsibility is to its Client and this document does not exonerate parties to a transaction from exercising all their rights and obligations under the transaction documents. Any unauthorized alteration, forgery or falsification of the content or appearance of this document is unlawful and offenders may be prosecuted to the fullest extent of the law.

Unless otherwise stated, the results shown in this test report refer only to the sample(s) tested. This document cannot be reproduced except in full, without prior approval of the Company.

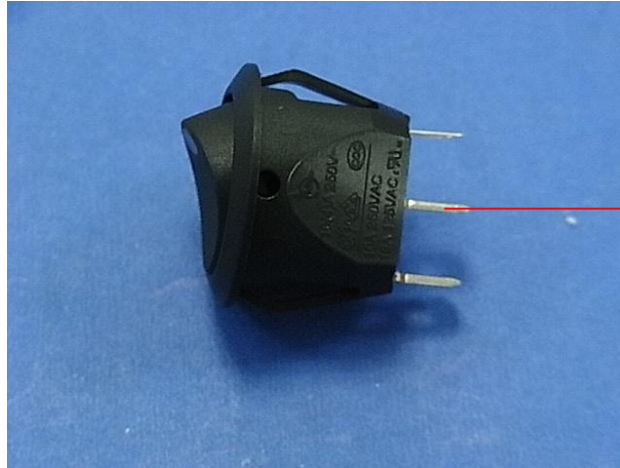




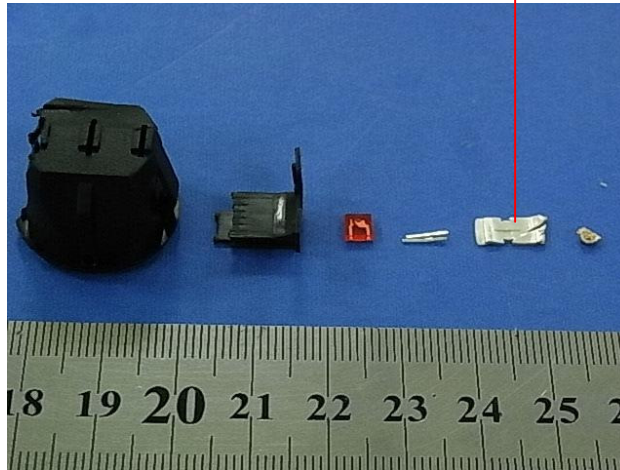
This document is issued by the Company under its General Conditions of Service printed overleaf or available on request and accessible at http://www.sgs.com/terms_and_conditions.htm. Attention is drawn to the limitation of liability, indemnification and jurisdiction issues defined therein. Any holder of this document is advised that information contained hereon reflects the Company's findings at the time of its intervention only and within the limits of Client's instructions, if any. The Company's sole responsibility is to its Client and this document does not constitute parties to a transaction from exercising all their rights and obligations under the transaction documents. Any unauthorized alteration, forgery or falsification of the content or appearance of this document is unlawful and offenders may be prosecuted to the fullest extent of the law. Unless otherwise stated, the results shown in this test report refer only to the sample(s) tested. This document cannot be reproduced except in full, without prior approval of the Company.



GZ0910098749/CHEM



GZ0910098749/CHEM



(SGS authenticate the photo on original report only)

*** End of Report ***

This document is issued by the Company under its General Conditions of Service printed overleaf or available on request and accessible at http://www.sgs.com/terms_and_conditions.htm. Attention is drawn to the limitation of liability, indemnification and jurisdiction issues defined therein. Any holder of this document is advised that information contained herein reflects the Company's findings at the time of its intervention only and within the limits of Client's instructions, if any. The Company's sole responsibility is to its Client and this document does not constitute part of a transaction from exercising all their rights and obligations under the transaction documents. Any unauthorized alteration, forgery or falsification of the content or appearance of this document is unlawful and offenders may be prosecuted to the fullest extent of the law. Unless otherwise stated, the results shown in this test report refer only to the sample(s) tested. This document cannot be reproduced except in full, without prior approval of the Company.

