

## Test Report

No. : CE/2012/31225B Date : 2012/04/13 Page : 1 of 14

LIGHT COUNTRY CO., LTD.  
10-1, NO. 102, SEC. 3, CHUNG SHAN RD., CHUNG HO DISTRICT, NEW TAIPEI  
CITY, TAIWAN



### The following sample(s) was/were submitted and identified by/on behalf of the client as:

Sample Description : DIP SWITCH SLIDE, PIANO, RIGHT ANGLE TYPE  
Style/Item No. : RS/RSR, RP/RPL, RA/RAR, SERIES  
Country of Origin : TAIWAN  
Sample Receiving Date : 2012/02/23 AND 2012/03/05  
Testing Period : 2012/02/23 TO 2012/03/03 AND 2012/03/05 TO 2012/03/12

=====  
**Test Result(s)** : Please refer to next page(s).

\* This report is combined with 6 copies of test reports which provided by client. \*



**Chenyu Kung / Operation Manager**  
Signed for and on behalf of  
**SGS TAIWAN LTD.**  
**Chemical Laboratory – Taipei**

Unless otherwise stated the results shown in this test report refer only to the sample(s) tested. This test report cannot be reproduced, except in full, without prior written permission of the Company. 除非另有說明，此報告結果僅對測試之樣品負責。本報告未經本公司書面許可，不可部分複製。  
This document is issued by the Company subject to its General Conditions of Service printed overleaf, available on request or accessible at [www.sgs.com/terms\\_and\\_conditions.htm](http://www.sgs.com/terms_and_conditions.htm) and, for electronic format documents, subject to Terms and Conditions for Electronic Documents at [www.sgs.com/en/Terms-and-Conditions/Terms-e-Document](http://www.sgs.com/en/Terms-and-Conditions/Terms-e-Document). Attention is drawn to the limitation of liability, indemnification and jurisdiction issues defined therein. Any holder of this document is advised that information contained hereon reflects the Company's findings at the time of its intervention only and within the limits of Client's instructions, if any. The Company's sole responsibility is to its Client and this document does not exonerate parties to a transaction from exercising all their rights and obligations under the transaction documents. This document cannot be reproduced except in full, without prior written approval of the Company. Any unauthorized alteration, forgery or falsification of the content or appearance of this document is unlawful and offenders may be prosecuted to the fullest extent of the law.

# Test Report

No. : CE/2012/31225B Date : 2012/04/13 Page : 2 of 14

LIGHT COUNTRY CO., LTD.

10-1, NO. 102, SEC. 3, CHUNG SHAN RD., CHUNG HO DISTRICT, NEW TAIPEI CITY, TAIWAN



## Test Result(s)

- PART NAME No.1 : DK. GRAY LUMP (CE/2012/25098A)  
 PART NAME No.2 : MIXED WHITE PLASTIC (2 TYPES) (CE/2012/31217)  
 PART NAME No.3 : RED PLASTIC (CE/2012/31218)  
 PART NAME No.4 : BLUE PLASTIC (CE/2012/31219)  
 PART NAME No.5 : BLACK PLASTIC (CE/2012/31220)  
 PART NAME No.6 : GOLDEN COLORED METAL (INCLUDING THE PLATING LAYER) (CE/2012/31225)

Test Item(s)	Unit	Method	MDL	Result				
				No.1	No.2	No.3	No.4	No.5
Cadmium (Cd)	mg/kg	With reference to IEC 62321: 2008 and performed by ICP-AES.	2	n.d.	n.d.	n.d.	n.d.	n.d.
Lead (Pb)	mg/kg	With reference to IEC 62321: 2008 and performed by ICP-AES.	2	n.d.	13	15	12	9
Mercury (Hg)	mg/kg	With reference to IEC 62321: 2008 and performed by ICP-AES.	2	n.d.	n.d.	n.d.	n.d.	n.d.
Hexavalent Chromium Cr(VI)	mg/kg	With reference to IEC 62321: 2008 and performed by UV-VIS.	2	n.d.	n.d.	n.d.	n.d.	n.d.
Arsenic (As)	mg/kg	With reference to US EPA Method 3052 for Arsenic Content. Analysis was performed by ICP-AES.	2	n.d.	---	---	---	---
Selenium (Se)	mg/kg	With reference to US EPA Method 3052 for Selenium Content. Analysis was performed by ICP-AES.	2	n.d.	---	---	---	---
Barium (Ba)	mg/kg	With reference to US EPA Method 3050B for Barium Content. Analysis was performed by ICP-AES.	2	n.d.	---	---	---	---
Chromium (Cr)	mg/kg	With reference to US EPA Method 3050B for Chromium Content. Analysis was performed by ICP-AES.	2	n.d.	---	---	---	---

Unless otherwise stated the results shown in this test report refer only to the sample(s) tested. This test report cannot be reproduced, except in full, without prior written permission of the Company. 除非另有說明，此報告結果僅對測試之樣品負責。本報告未經本公司書面許可，不可部分複製。  
 This document is issued by the Company subject to its General Conditions of Service printed overleaf, available on request or accessible at [www.sgs.com/terms\\_and\\_conditions.htm](http://www.sgs.com/terms_and_conditions.htm) and, for electronic format documents, subject to Terms and Conditions for Electronic Documents at [www.sgs.com/en/Terms-and-Conditions/Terms-e-Documents](http://www.sgs.com/en/Terms-and-Conditions/Terms-e-Documents). Attention is drawn to the limitation of liability, indemnification and jurisdiction issues defined therein. Any holder of this document is advised that information contained hereon reflects the Company's findings at the time of its intervention only and within the limits of Client's instructions, if any. The Company's sole responsibility is to its Client and this document does not exonerate parties to a transaction from exercising all their rights and obligations under the transaction documents. This document cannot be reproduced except in full, without prior written approval of the Company. Any unauthorized alteration, forgery or falsification of the content or appearance of this document is unlawful and offenders may be prosecuted to the fullest extent of the law.

# Test Report

No. : CE/2012/31225B Date : 2012/04/13 Page : 3 of 14

LIGHT COUNTRY CO., LTD.

10-1, NO. 102, SEC. 3, CHUNG SHAN RD., CHUNG HO DISTRICT, NEW TAIPEI CITY, TAIWAN



Test Item(s)	Unit	Method	MDL	Result				
				No.1	No.2	No.3	No.4	No.5
Antimony (Sb)	mg/kg	With reference to US EPA Method 3050B for Antimony Content. Analysis was performed by ICP-AES.	2	n.d.	---	---	---	---
Halogen-Chlorine (Cl) (CAS No.: 22537-15-1)	mg/kg	With reference to BS EN 14582:2007. Analysis was performed by IC.	50	1200	---	---	---	---
Halogen-Bromine (Br) (CAS No.: 10097-32-2)	mg/kg	With reference to BS EN 14582:2007. Analysis was performed by IC.	50	n.d.	---	---	---	---
Perfluorooctane sulfonates (PFOS-Acid, Metal Salt, Amide)	mg/kg	With reference to US EPA 3540C: 1996 method for PFOS Content. Analysis was performed by LC/MS.	10	n.d.	n.d.	n.d.	n.d.	n.d.
PFOA (CAS No.: 335-67-1)	mg/kg	With reference to US EPA 3540C: 1996 method for PFOA Content. Analysis was performed by LC/MS.	10	n.d.	n.d.	n.d.	n.d.	n.d.
BBP (Benzyl butyl phthalate) (CAS No.: 85-68-7)	%	With reference to EN 14372. Analysis was performed by GC/MS.	0.003	n.d.	n.d.	n.d.	n.d.	n.d.
DEHP (Di- (2-ethylhexyl) phthalate) (CAS No.: 117-81-7)	%	With reference to EN 14372. Analysis was performed by GC/MS.	0.003	n.d.	n.d.	n.d.	n.d.	n.d.
DIDP (Di-isodecyl phthalate) (CAS No.: 26761-40-0)	%	With reference to EN 14372. Analysis was performed by GC/MS.	0.01	n.d.	n.d.	n.d.	n.d.	n.d.
DINP (Di-isononyl phthalate) (CAS No.: 28553-12-0)	%	With reference to EN 14372. Analysis was performed by GC/MS.	0.01	n.d.	n.d.	n.d.	n.d.	n.d.
DNOP (Di-n-octyl phthalate) (CAS No.: 117-84-0)	%	With reference to EN 14372. Analysis was performed by GC/MS.	0.003	n.d.	n.d.	n.d.	n.d.	n.d.
DBP (Dibutyl phthalate) (CAS No.: 84-74-2)	%	With reference to EN 14372. Analysis was performed by GC/MS.	0.003	0.326	n.d.	n.d.	n.d.	n.d.

Unless otherwise stated the results shown in this test report refer only to the sample(s) tested. This test report cannot be reproduced, except in full, without prior written permission of the Company. 除非另有說明，此報告結果僅對測試之樣品負責。本報告未經本公司書面許可，不可部分複製。  
 This document is issued by the Company subject to its General Conditions of Service printed overleaf, available on request or accessible at [www.sgs.com/terms\\_and\\_conditions.htm](http://www.sgs.com/terms_and_conditions.htm) and, for electronic format documents, subject to Terms and Conditions for Electronic Documents at [www.sgs.com/en/Terms-and-Conditions/Terms-e-Document](http://www.sgs.com/en/Terms-and-Conditions/Terms-e-Document). Attention is drawn to the limitation of liability, indemnification and jurisdiction issues defined therein. Any holder of this document is advised that information contained hereon reflects the Company's findings at the time of its intervention only and within the limits of Client's instructions, if any. The Company's sole responsibility is to its Client and this document does not exonerate parties to a transaction from exercising all their rights and obligations under the transaction documents. This document cannot be reproduced except in full, without prior written approval of the Company. Any unauthorized alteration, forgery or falsification of the content or appearance of this document is unlawful and offenders may be prosecuted to the fullest extent of the law.

# Test Report

No. : CE/2012/31225B Date : 2012/04/13 Page : 4 of 14

LIGHT COUNTRY CO., LTD.

10-1, NO. 102, SEC. 3, CHUNG SHAN RD., CHUNG HO DISTRICT, NEW TAIPEI CITY, TAIWAN



Test Item(s)	Unit	Method	MDL	Result						
				No.1	No.2	No.3	No.4	No.5		
<b>Sum of PBBs</b>	mg/kg	With reference to IEC 62321: 2008 and performed by GC/MS.	-	n.d.	n.d.	n.d.	n.d.	n.d.		
Monobromobiphenyl			5	n.d.	n.d.	n.d.	n.d.	n.d.		
Dibromobiphenyl			5	n.d.	n.d.	n.d.	n.d.	n.d.		
Tribromobiphenyl			5	n.d.	n.d.	n.d.	n.d.	n.d.		
Tetrabromobiphenyl			5	n.d.	n.d.	n.d.	n.d.	n.d.		
Pentabromobiphenyl			5	n.d.	n.d.	n.d.	n.d.	n.d.		
Hexabromobiphenyl			5	n.d.	n.d.	n.d.	n.d.	n.d.		
Heptabromobiphenyl			5	n.d.	n.d.	n.d.	n.d.	n.d.		
Octabromobiphenyl			5	n.d.	n.d.	n.d.	n.d.	n.d.		
Nonabromobiphenyl			5	n.d.	n.d.	n.d.	n.d.	n.d.		
Decabromobiphenyl			5	n.d.	n.d.	n.d.	n.d.	n.d.		
<b>Sum of PBDEs</b>					-	n.d.	n.d.	n.d.	n.d.	n.d.
Monobromodiphenyl ether					5	n.d.	n.d.	n.d.	n.d.	n.d.
Dibromodiphenyl ether					5	n.d.	n.d.	n.d.	n.d.	n.d.
Tribromodiphenyl ether					5	n.d.	n.d.	n.d.	n.d.	n.d.
Tetrabromodiphenyl ether					5	n.d.	n.d.	n.d.	n.d.	n.d.
Pentabromodiphenyl ether					5	n.d.	n.d.	n.d.	n.d.	n.d.
Hexabromodiphenyl ether					5	n.d.	n.d.	n.d.	n.d.	n.d.
Heptabromodiphenyl ether					5	n.d.	n.d.	n.d.	n.d.	n.d.
Octabromodiphenyl ether					5	n.d.	n.d.	n.d.	n.d.	n.d.
Nonabromodiphenyl ether					5	n.d.	n.d.	n.d.	n.d.	n.d.
Decabromodiphenyl ether					5	n.d.	n.d.	n.d.	n.d.	n.d.

Test Item(s)	Unit	Method	MDL	Result
				No.6
Cadmium (Cd)	mg/kg	With reference to IEC 62321: 2008 and performed by ICP-AES.	2	n.d.
Lead (Pb)	mg/kg	With reference to IEC 62321: 2008 and performed by ICP-AES.	2	19
Mercury (Hg)	mg/kg	With reference to IEC 62321: 2008 and performed by ICP-AES.	2	n.d.

Unless otherwise stated the results shown in this test report refer only to the sample(s) tested. This test report cannot be reproduced, except in full, without prior written permission of the Company. 除非另有說明，此報告結果僅對測試之樣品負責。本報告未經本公司書面許可，不可部分複製。  
 This document is issued by the Company subject to its General Conditions of Service printed overleaf, available on request or accessible at [www.sgs.com/terms\\_and\\_conditions.htm](http://www.sgs.com/terms_and_conditions.htm) and, for electronic format documents, subject to Terms and Conditions for Electronic Documents at [www.sgs.com/en/Terms-and-Conditions/Terms-e-Document](http://www.sgs.com/en/Terms-and-Conditions/Terms-e-Document). Attention is drawn to the limitation of liability, indemnification and jurisdiction issues defined therein. Any holder of this document is advised that information contained hereon reflects the Company's findings at the time of its intervention only and within the limits of Client's instructions, if any. The Company's sole responsibility is to its Client and this document does not exonerate parties to a transaction from exercising all their rights and obligations under the transaction documents. This document cannot be reproduced except in full, without prior written approval of the Company. Any unauthorized alteration, forgery or falsification of the content or appearance of this document is unlawful and offenders may be prosecuted to the fullest extent of the law.

## Test Report

No. : CE/2012/31225B Date : 2012/04/13 Page : 5 of 14

LIGHT COUNTRY CO., LTD.

10-1, NO. 102, SEC. 3, CHUNG SHAN RD., CHUNG HO DISTRICT, NEW TAIPEI CITY, TAIWAN



Test Item(s)	Unit	Method	MDL	Result
				No.6
Hexavalent Chromium Cr(VI)	**	With reference to IEC 62321: 2008 and performed by Boiling water extraction Method.#	#	Negative
Perfluorooctane sulfonates (PFOS-Acid, Metal Salt, Amide)	mg/kg	With reference to US EPA 3540C: 1996 method for PFOS Content. Analysis was performed by LC/MS.	10	n.d.
PFOA (CAS No.: 335-67-1)	mg/kg	With reference to US EPA 3540C: 1996 method for PFOA Content. Analysis was performed by LC/MS.	10	n.d.

### Note :

1. mg/kg = ppm ; 0.1wt% = 1000ppm
2. n.d. = Not Detected
3. MDL = Method Detection Limit
4. " - " = Not Regulated
5. "---" = Not Conducted
6. \*\* = Qualitative analysis (No Unit)
7. # = a. Positive means the presence of CrVI on the tested areas  
b. Negative means the absence of CrVI on the tested areas  
The detected concentration in boiling-water-extraction solution is equal or greater than 0.02 mg/kg with 50 cm<sup>2</sup> tested areas.
8. The sample(s) was/were analyzed on behalf of the applicant as mixing sample in one testing. The above result(s) was/were only given as the informality value.

### PFOS Reference Information : POPs - (EU) 757/2010

Outlawing PFOS as substances or preparations in concentrations above 0.001% (10ppm), in semi-finished products or articles or parts at a level above 0.1%(1000ppm), in textiles or other coated materials above 1µg/m<sup>2</sup>.

Unless otherwise stated the results shown in this test report refer only to the sample(s) tested. This test report cannot be reproduced, except in full, without prior written permission of the Company.除非另有說明，此報告結果僅對測試之樣品負責。本報告未經本公司書面許可，不可部分複製。  
This document is issued by the Company subject to its General Conditions of Service printed overleaf, available on request or accessible at [www.sgs.com/terms\\_and\\_conditions.htm](http://www.sgs.com/terms_and_conditions.htm) and, for electronic format documents, subject to Terms and Conditions for Electronic Documents at [www.sgs.com/en/Terms-and-Conditions/Terms-e-Documents](http://www.sgs.com/en/Terms-and-Conditions/Terms-e-Documents). Attention is drawn to the limitation of liability, indemnification and jurisdiction issues defined therein. Any holder of this document is advised that information contained hereon reflects the Company's findings at the time of its intervention only and within the limits of Client's instructions, if any. The Company's sole responsibility is to its Client and this document does not exonerate parties to a transaction from exercising all their rights and obligations under the transaction documents. This document cannot be reproduced except in full, without prior written approval of the Company. Any unauthorized alteration, forgery or falsification of the content or appearance of this document is unlawful and offenders may be prosecuted to the fullest extent of the law.

## Test Report

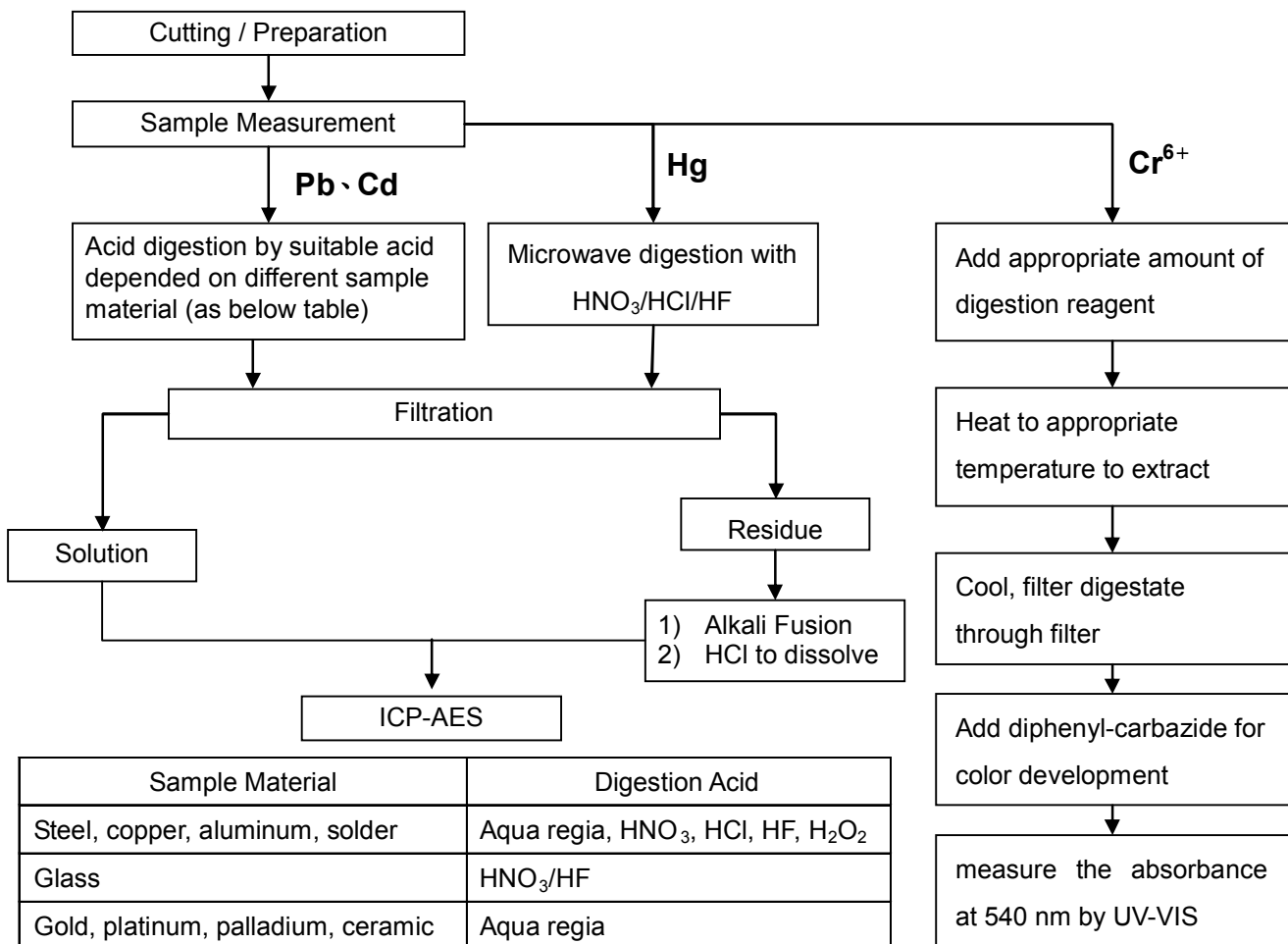
No. : CE/2012/31225B Date : 2012/04/13 Page : 6 of 14

LIGHT COUNTRY CO., LTD.

10-1, NO. 102, SEC. 3, CHUNG SHAN RD., CHUNG HO DISTRICT, NEW TAIPEI CITY, TAIWAN



- 1) These samples were dissolved totally by pre-conditioning method according to below flow chart.  
(Cr<sup>6+</sup> test method excluded)
- 2) Name of the person who made measurement: Climbgreat Yang
- 3) Name of the person in charge of measurement: Troy Chang



Sample Material	Digestion Acid
Steel, copper, aluminum, solder	Aqua regia, HNO <sub>3</sub> , HCl, HF, H <sub>2</sub> O <sub>2</sub>
Glass	HNO <sub>3</sub> /HF
Gold, platinum, palladium, ceramic	Aqua regia
Silver	HNO <sub>3</sub>
Plastic	H <sub>2</sub> SO <sub>4</sub> , H <sub>2</sub> O <sub>2</sub> , HNO <sub>3</sub> , HCl
Others	Any acid to total digestion

Unless otherwise stated the results shown in this test report refer only to the sample(s) tested. This test report cannot be reproduced, except in full, without prior written permission of the Company. 除非另有說明，此報告結果僅對測試之樣品負責。本報告未經本公司書面許可，不可部分複製。  
This document is issued by the Company subject to its General Conditions of Service printed overleaf, available on request or accessible at [www.sgs.com/terms\\_and\\_conditions.htm](http://www.sgs.com/terms_and_conditions.htm) and, for electronic format documents, subject to Terms and Conditions for Electronic Documents at [www.sgs.com/en/Terms-and-Conditions/Terms-e-Document](http://www.sgs.com/en/Terms-and-Conditions/Terms-e-Document). Attention is drawn to the limitation of liability, indemnification and jurisdiction issues defined therein. Any holder of this document is advised that information contained hereon reflects the Company's findings at the time of its intervention only and within the limits of Client's instructions, if any. The Company's sole responsibility is to its Client and this document does not exonerate parties to a transaction from exercising all their rights and obligations under the transaction documents. This document cannot be reproduced except in full, without prior written approval of the Company. Any unauthorized alteration, forgery or falsification of the content or appearance of this document is unlawful and offenders may be prosecuted to the fullest extent of the law.

## Test Report

No. : CE/2012/31225B Date : 2012/04/13 Page : 7 of 14

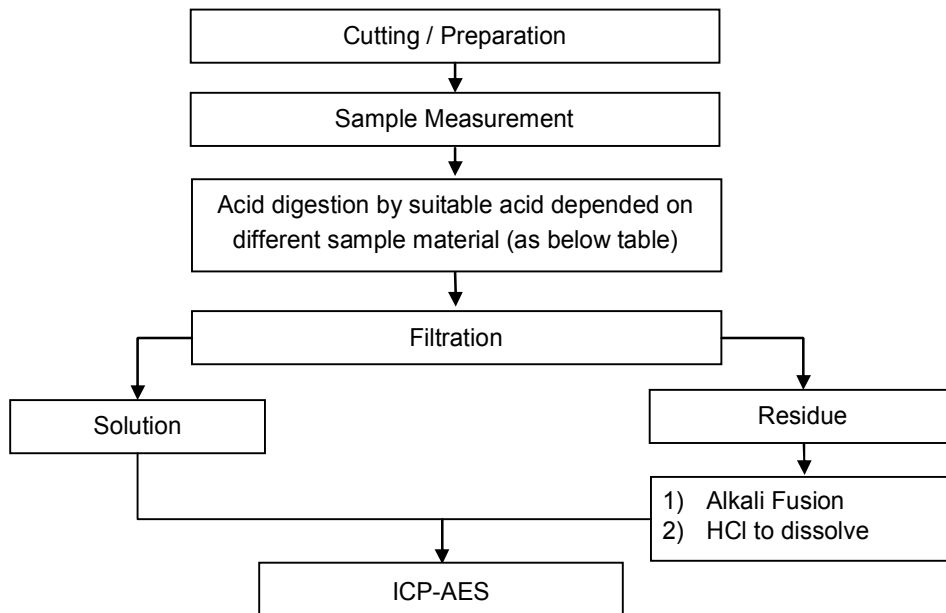
LIGHT COUNTRY CO., LTD.

10-1, NO. 102, SEC. 3, CHUNG SHAN RD., CHUNG HO DISTRICT, NEW TAIPEI CITY, TAIWAN



- 1) These samples were dissolved totally by pre-conditioning method according to below flow chart.
- 2) Name of the person who made measurement: Climbgreat Yang
- 3) Name of the person in charge of measurement: Troy Chang

### Flow Chart of digestion for the elements analysis performed by ICP-AES



Steel, copper, aluminum, solder	Aqua regia, HNO <sub>3</sub> , HCl, HF, H <sub>2</sub> O <sub>2</sub>
Glass	HNO <sub>3</sub> /HF
Gold, platinum, palladium, ceramic	Aqua regia
Silver	HNO <sub>3</sub>
Plastic	H <sub>2</sub> SO <sub>4</sub> , H <sub>2</sub> O <sub>2</sub> , HNO <sub>3</sub> , HCl
Others	Any acid to total digestion

Unless otherwise stated the results shown in this test report refer only to the sample(s) tested. This test report cannot be reproduced, except in full, without prior written permission of the Company. 除非另有說明，此報告結果僅對測試之樣品負責。本報告未經本公司書面許可，不可部分複製。  
 This document is issued by the Company subject to its General Conditions of Service printed overleaf, available on request or accessible at [www.sgs.com/terms\\_and\\_conditions.htm](http://www.sgs.com/terms_and_conditions.htm) and, for electronic format documents, subject to Terms and Conditions for Electronic Documents at [www.sgs.com/en/Terms-and-Conditions/Terms-e-Document](http://www.sgs.com/en/Terms-and-Conditions/Terms-e-Document). Attention is drawn to the limitation of liability, indemnification and jurisdiction issues defined therein. Any holder of this document is advised that information contained hereon reflects the Company's findings at the time of its intervention only and within the limits of Client's instructions, if any. The Company's sole responsibility is to its Client and this document does not exonerate parties to a transaction from exercising all their rights and obligations under the transaction documents. This document cannot be reproduced except in full, without prior written approval of the Company. Any unauthorized alteration, forgery or falsification of the content or appearance of this document is unlawful and offenders may be prosecuted to the fullest extent of the law.

## Test Report

No. : CE/2012/31225B Date : 2012/04/13 Page : 8 of 14

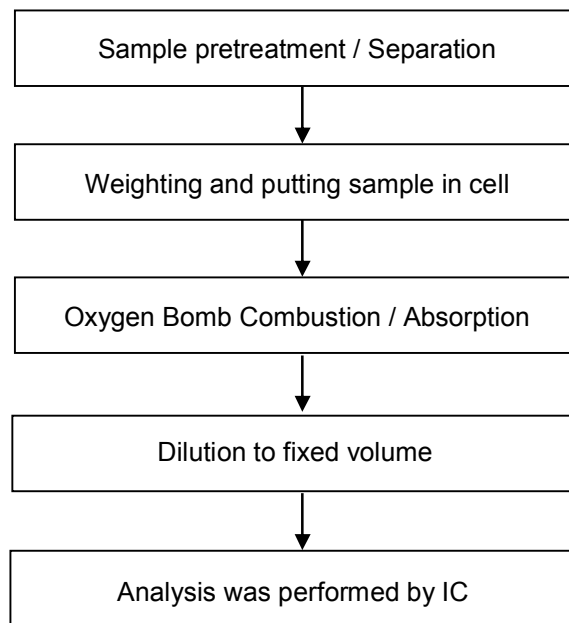
LIGHT COUNTRY CO., LTD.

10-1, NO. 102, SEC. 3, CHUNG SHAN RD., CHUNG HO DISTRICT, NEW TAIPEI CITY, TAIWAN



### Analytical flow chart of halogen content

- 1) Name of the person who made measurement: Rita Chen
- 2) Name of the person in charge of measurement: Troy Chang



Unless otherwise stated the results shown in this test report refer only to the sample(s) tested. This test report cannot be reproduced, except in full, without prior written permission of the Company. 除非另有說明，此報告結果僅對測試之樣品負責。本報告未經本公司書面許可，不可部分複製。  
 This document is issued by the Company subject to its General Conditions of Service printed overleaf, available on request or accessible at [www.sgs.com/terms\\_and\\_conditions.htm](http://www.sgs.com/terms_and_conditions.htm) and, for electronic format documents, subject to Terms and Conditions for Electronic Documents at [www.sgs.com/en/Terms-and-Conditions/Terms-e-Document](http://www.sgs.com/en/Terms-and-Conditions/Terms-e-Document). Attention is drawn to the limitation of liability, indemnification and jurisdiction issues defined therein. Any holder of this document is advised that information contained hereon reflects the Company's findings at the time of its intervention only and within the limits of Client's instructions, if any. The Company's sole responsibility is to its Client and this document does not exonerate parties to a transaction from exercising all their rights and obligations under the transaction documents. This document cannot be reproduced except in full, without prior written approval of the Company. Any unauthorized alteration, forgery or falsification of the content or appearance of this document is unlawful and offenders may be prosecuted to the fullest extent of the law.



## Test Report

No. : CE/2012/31225B Date : 2012/04/13 Page : 9 of 14

LIGHT COUNTRY CO., LTD.

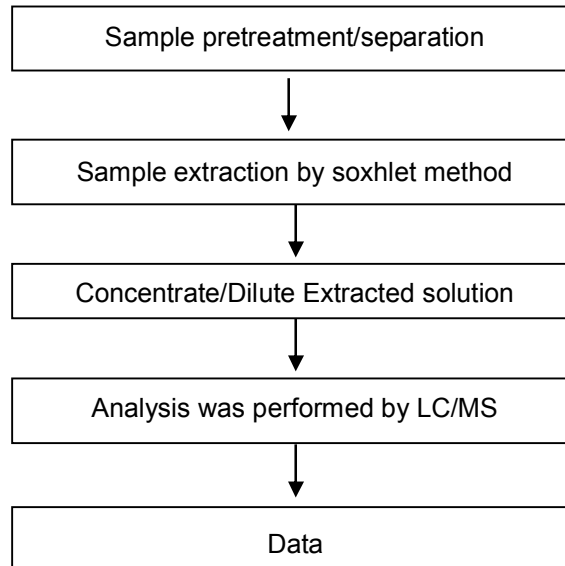
10-1, NO. 102, SEC. 3, CHUNG SHAN RD., CHUNG HO DISTRICT, NEW TAIPEI CITY, TAIWAN



### Analytical flow chart of Soxhlet extraction (LC/MS) procedure

- Name of the person who made measurement: Roman Wong
- Name of the person in charge of measurement: Troy Chang

#### 【 Test Items: PFOS/PFOA 、 Benzotriazole 】



Unless otherwise stated the results shown in this test report refer only to the sample(s) tested. This test report cannot be reproduced, except in full, without prior written permission of the Company. 除非另有說明，此報告結果僅對測試之樣品負責。本報告未經本公司書面許可，不可部分複製。  
 This document is issued by the Company subject to its General Conditions of Service printed overleaf, available on request or accessible at [www.sgs.com/terms\\_and\\_conditions.htm](http://www.sgs.com/terms_and_conditions.htm) and, for electronic format documents, subject to Terms and Conditions for Electronic Documents at [www.sgs.com/en/Terms-and-Conditions/Terms-e-Documents](http://www.sgs.com/en/Terms-and-Conditions/Terms-e-Documents). Attention is drawn to the limitation of liability, indemnification and jurisdiction issues defined therein. Any holder of this document is advised that information contained hereon reflects the Company's findings at the time of its intervention only and within the limits of Client's instructions, if any. The Company's sole responsibility is to its Client and this document does not exonerate parties to a transaction from exercising all their rights and obligations under the transaction documents. This document cannot be reproduced except in full, without prior written approval of the Company. Any unauthorized alteration, forgery or falsification of the content or appearance of this document is unlawful and offenders may be prosecuted to the fullest extent of the law.

## Test Report

No. : CE/2012/31225B Date : 2012/04/13 Page : 10 of 14

LIGHT COUNTRY CO., LTD.

10-1, NO. 102, SEC. 3, CHUNG SHAN RD., CHUNG HO DISTRICT, NEW TAIPEI CITY, TAIWAN

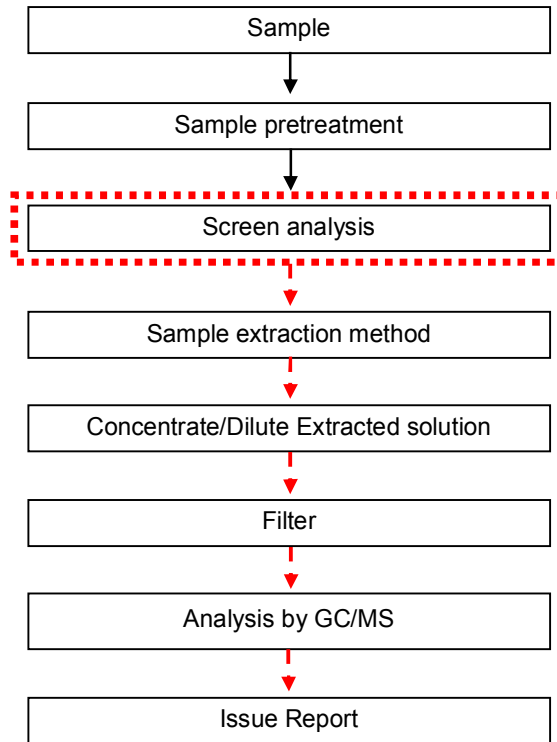


### Analytical flow chart

- Name of the person who made measurement: Roman Wong
- Name of the person in charge of measurement: Troy Chang

### 【 Test Items: PBB/PBDE, TBBP-A-bis 】

First testing process → Optional screen process ..... Confirmation process - - ▶



Unless otherwise stated the results shown in this test report refer only to the sample(s) tested. This test report cannot be reproduced, except in full, without prior written permission of the Company. 除非另有說明，此報告結果僅對測試之樣品負責。本報告未經本公司書面許可，不可部分複製。  
 This document is issued by the Company subject to its General Conditions of Service printed overleaf, available on request or accessible at [www.sgs.com/terms\\_and\\_conditions.htm](http://www.sgs.com/terms_and_conditions.htm) and, for electronic format documents, subject to Terms and Conditions for Electronic Documents at [www.sgs.com/en/Terms-and-Conditions/Terms-e-Document](http://www.sgs.com/en/Terms-and-Conditions/Terms-e-Document). Attention is drawn to the limitation of liability, indemnification and jurisdiction issues defined therein. Any holder of this document is advised that information contained hereon reflects the Company's findings at the time of its intervention only and within the limits of Client's instructions, if any. The Company's sole responsibility is to its Client and this document does not exonerate parties to a transaction from exercising all their rights and obligations under the transaction documents. This document cannot be reproduced except in full, without prior written approval of the Company. Any unauthorized alteration, forgery or falsification of the content or appearance of this document is unlawful and offenders may be prosecuted to the fullest extent of the law.

## Test Report

No. : CE/2012/31225B Date : 2012/04/13 Page : 11 of 14

LIGHT COUNTRY CO., LTD.

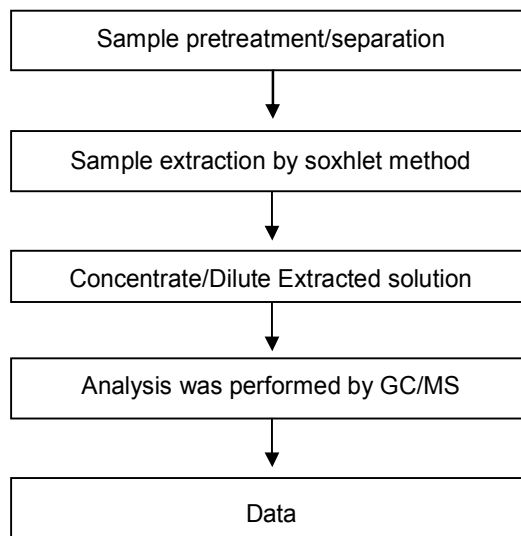
10-1, NO. 102, SEC. 3, CHUNG SHAN RD., CHUNG HO DISTRICT, NEW TAIPEI CITY, TAIWAN



### Analytical flow chart of Soxhlet extraction (GC/MS) procedure

- Name of the person who made measurement: Roman Wong
- Name of the person in charge of measurement: Troy Chang

**【Test Items: Phthalate 、Benzotriazole 、HBCDD 、NP 、DBBT 、Organic phosphorus compounds】**



Unless otherwise stated the results shown in this test report refer only to the sample(s) tested. This test report cannot be reproduced, except in full, without prior written permission of the Company. 除非另有說明，此報告結果僅對測試之樣品負責。本報告未經本公司書面許可，不可部分複製。  
 This document is issued by the Company subject to its General Conditions of Service printed overleaf, available on request or accessible at [www.sgs.com/terms\\_and\\_conditions.htm](http://www.sgs.com/terms_and_conditions.htm) and, for electronic format documents, subject to Terms and Conditions for Electronic Documents at [www.sgs.com/en/Terms-and-Conditions/Terms-e-Documents](http://www.sgs.com/en/Terms-and-Conditions/Terms-e-Documents). Attention is drawn to the limitation of liability, indemnification and jurisdiction issues defined therein. Any holder of this document is advised that information contained hereon reflects the Company's findings at the time of its intervention only and within the limits of Client's instructions, if any. The Company's sole responsibility is to its Client and this document does not exonerate parties to a transaction from exercising all their rights and obligations under the transaction documents. This document cannot be reproduced except in full, without prior written approval of the Company. Any unauthorized alteration, forgery or falsification of the content or appearance of this document is unlawful and offenders may be prosecuted to the fullest extent of the law.

## Test Report

No. : CE/2012/31225B Date : 2012/04/13 Page : 12 of 14

LIGHT COUNTRY CO., LTD.

10-1, NO. 102, SEC. 3, CHUNG SHAN RD., CHUNG HO DISTRICT, NEW TAIPEI CITY, TAIWAN



\* The tested sample / part is marked by an arrow if it's shown on the photo. \*

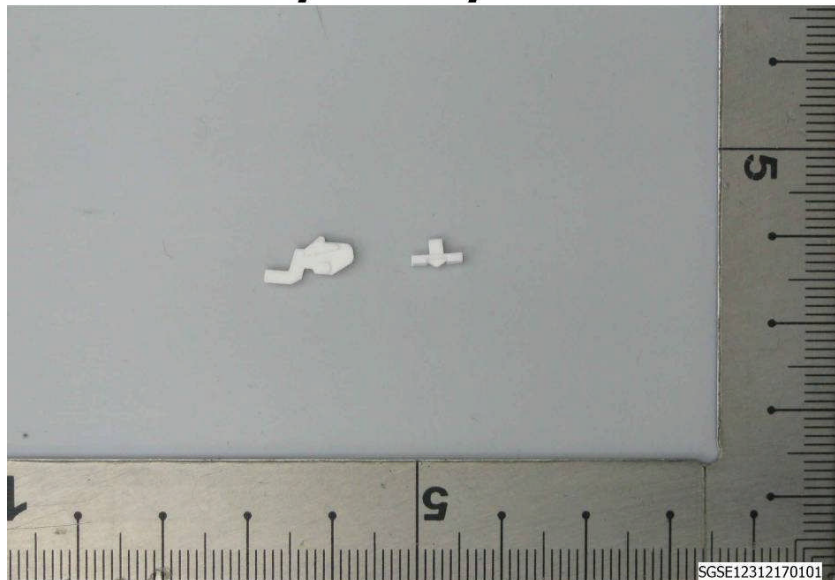
PART NAME No.1

### CE/2012/25098



PART NAME No.2

### CE/2012/31217



Unless otherwise stated the results shown in this test report refer only to the sample(s) tested. This test report cannot be reproduced, except in full, without prior written permission of the Company. 除非另有說明，此報告結果僅對測試之樣品負責。本報告未經本公司書面許可，不可部分複製。  
This document is issued by the Company subject to its General Conditions of Service printed overleaf, available on request or accessible at [www.sgs.com/terms\\_and\\_conditions.htm](http://www.sgs.com/terms_and_conditions.htm) and, for electronic format documents, subject to Terms and Conditions for Electronic Documents at [www.sgs.com/en/Terms-and-Conditions/Terms-e-Document](http://www.sgs.com/en/Terms-and-Conditions/Terms-e-Document). Attention is drawn to the limitation of liability, indemnification and jurisdiction issues defined therein. Any holder of this document is advised that information contained hereon reflects the Company's findings at the time of its intervention only and within the limits of Client's instructions, if any. The Company's sole responsibility is to its Client and this document does not exonerate parties to a transaction from exercising all their rights and obligations under the transaction documents. This document cannot be reproduced except in full, without prior written approval of the Company. Any unauthorized alteration, forgery or falsification of the content or appearance of this document is unlawful and offenders may be prosecuted to the fullest extent of the law.

## Test Report

No. : CE/2012/31225B Date : 2012/04/13 Page : 13 of 14

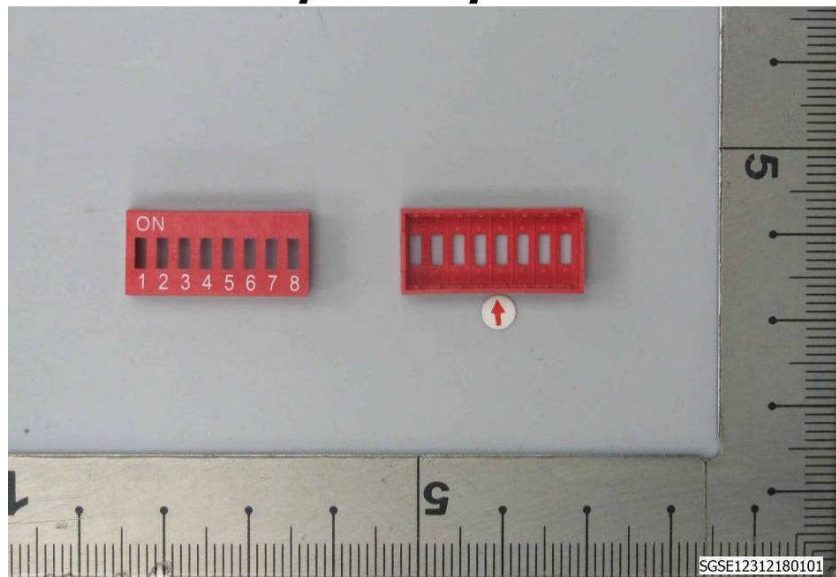
LIGHT COUNTRY CO., LTD.

10-1, NO. 102, SEC. 3, CHUNG SHAN RD., CHUNG HO DISTRICT, NEW TAIPEI CITY, TAIWAN



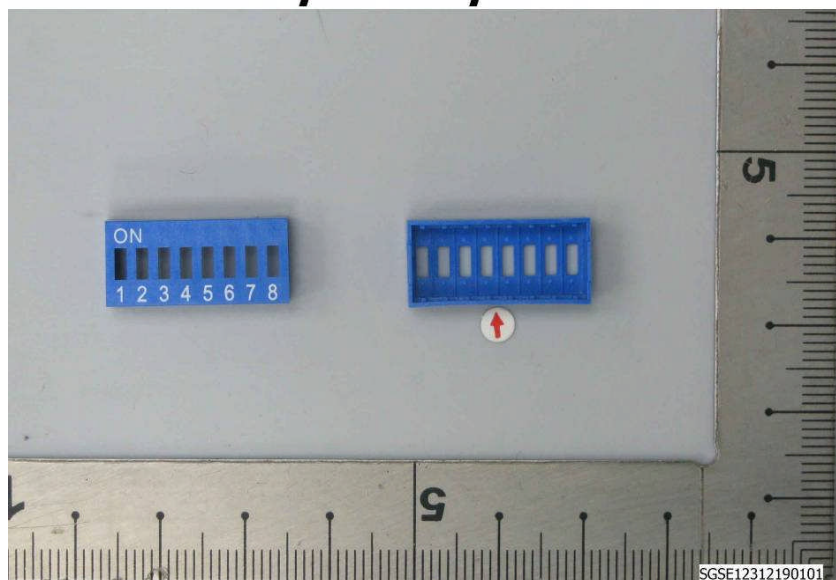
PART NAME No.3

### CE/2012/31218



PART NAME No.4

### CE/2012/31219



Unless otherwise stated the results shown in this test report refer only to the sample(s) tested. This test report cannot be reproduced, except in full, without prior written permission of the Company. 除非另有說明，此報告結果僅對測試之樣品負責。本報告未經本公司書面許可，不可部分複製。  
This document is issued by the Company subject to its General Conditions of Service printed overleaf, available on request or accessible at [www.sgs.com/terms\\_and\\_conditions.htm](http://www.sgs.com/terms_and_conditions.htm) and, for electronic format documents, subject to Terms and Conditions for Electronic Documents at [www.sgs.com/en/Terms-and-Conditions/Terms-e-Document](http://www.sgs.com/en/Terms-and-Conditions/Terms-e-Document). Attention is drawn to the limitation of liability, indemnification and jurisdiction issues defined therein. Any holder of this document is advised that information contained hereon reflects the Company's findings at the time of its intervention only and within the limits of Client's instructions, if any. The Company's sole responsibility is to its Client and this document does not exonerate parties to a transaction from exercising all their rights and obligations under the transaction documents. This document cannot be reproduced except in full, without prior written approval of the Company. Any unauthorized alteration, forgery or falsification of the content or appearance of this document is unlawful and offenders may be prosecuted to the fullest extent of the law.

## Test Report

No. : CE/2012/31225B Date : 2012/04/13 Page : 14 of 14

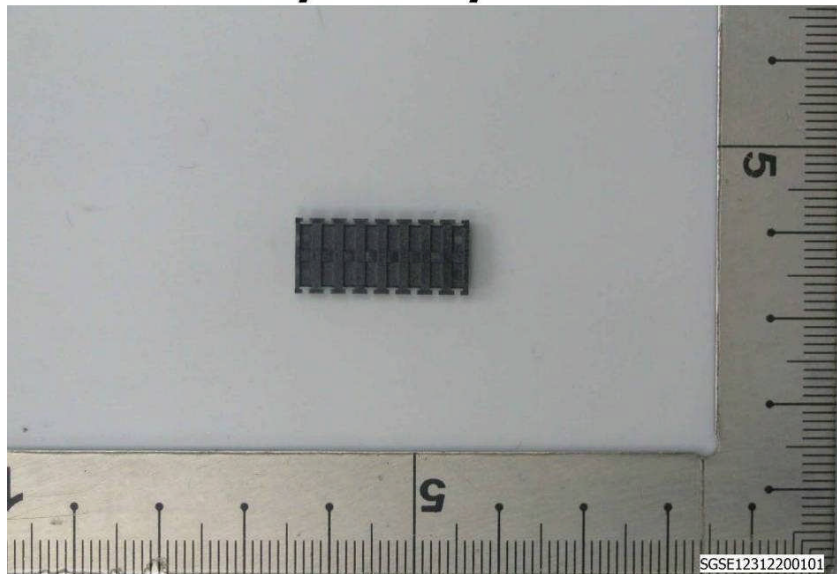
LIGHT COUNTRY CO., LTD.

10-1, NO. 102, SEC. 3, CHUNG SHAN RD., CHUNG HO DISTRICT, NEW TAIPEI CITY, TAIWAN



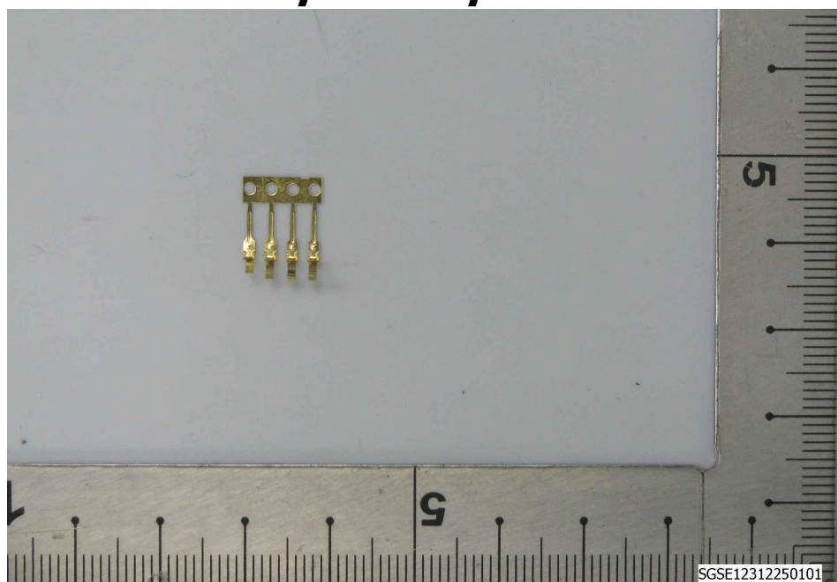
PART NAME No.5

### CE/2012/31220



PART NAME No.6

### CE/2012/31225



**\*\* End of Report \*\***

Unless otherwise stated the results shown in this test report refer only to the sample(s) tested. This test report cannot be reproduced, except in full, without prior written permission of the Company. 除非另有說明，此報告結果僅對測試之樣品負責。本報告未經本公司書面許可，不可部分複製。  
This document is issued by the Company subject to its General Conditions of Service printed overleaf, available on request or accessible at [www.sgs.com/terms\\_and\\_conditions.htm](http://www.sgs.com/terms_and_conditions.htm) and, for electronic format documents, subject to Terms and Conditions for Electronic Documents at [www.sgs.com/en/Terms-and-Conditions/Terms-e-Document](http://www.sgs.com/en/Terms-and-Conditions/Terms-e-Document). Attention is drawn to the limitation of liability, indemnification and jurisdiction issues defined therein. Any holder of this document is advised that information contained hereon reflects the Company's findings at the time of its intervention only and within the limits of Client's instructions, if any. The Company's sole responsibility is to its Client and this document does not exonerate parties to a transaction from exercising all their rights and obligations under the transaction documents. This document cannot be reproduced except in full, without prior written approval of the Company. Any unauthorized alteration, forgery or falsification of the content or appearance of this document is unlawful and offenders may be prosecuted to the fullest extent of the law.