

Push Button Switch P7, P9 Series



SPECIFICATION

- Electrical Rating : 1A 250VAC/3A 125VAC
- Mechanical life: Over 30,000 cycles
- Electrical life: Over 10,000 cycles
- Contact resistance: <math><20\text{m}\Omega</math>
- Insulation resistance: >1000M Ω

MATERIALS

- Housing: ABS Brass(P7)
- Button: PA66 ABS(P7)
- Base: Phenolic PA66(P7)
- Terminal: Brass alloy silver plated
- Spring: Steel wire
- Screw: Brass alloy Nickel plated
- Washer: Stainless steel

HOW TO ORDER

P7 Series	B Function	K Knob Color
P7	A OFF-ON	K Black
P9-1	B OFF-(ON)	W White
P9-2	C ON-(OFF)	G Gray
P9-3	() Momentary	O Orange
P9-4		R Red
P9-6		M Green
P9-7		Y Yellow
		B Blue

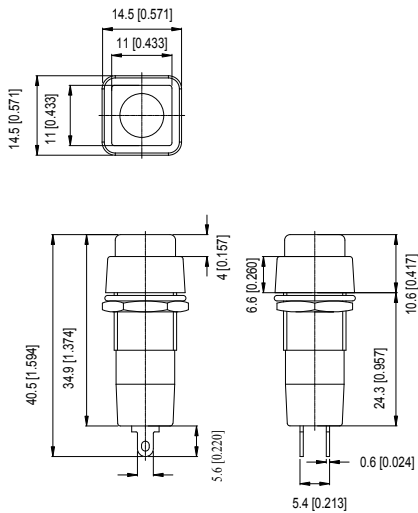
BUTTON COLOR CHART

Color No.	Color	Color No.	Color
1	White	6	Green
2	Black	7	Blue
3	Red(std.)	8	Brown
4	Orange	9	Gray
5	Yellow		

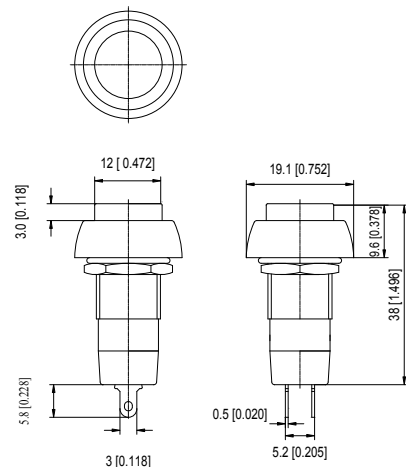
Push Button Switch P7, P9 Series

Dimension

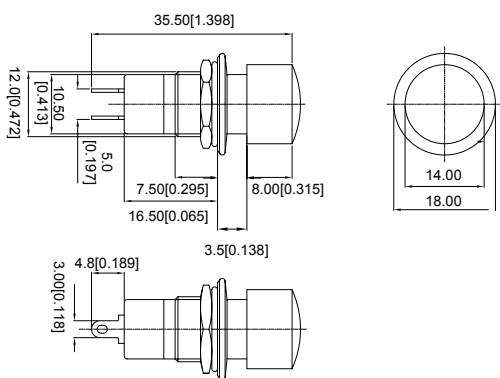
Model NO. Type
 P9-2A OFF-ON
 P9-2B OFF-(ON)



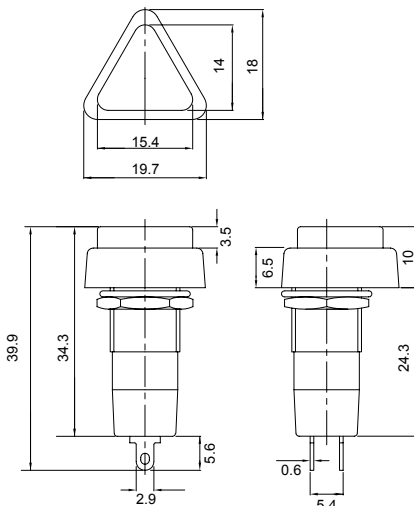
Model NO. Type
 P9-3A OFF-ON
 P9-3B OFF-(ON)



Model NO. Type
 P9-4A OFF-ON
 P9-4B OFF-(ON)



Model NO. Type
 P9-6A OFF-ON
 P9-6B OFF-(ON)



Model NO. Type
 P7-B OFF-(ON)
 P7-C OFF-(ON)

