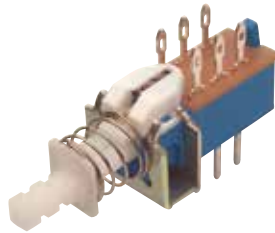




Push Button Switch A Series



Feature

Multiple keys and poles,interlock and individual lock

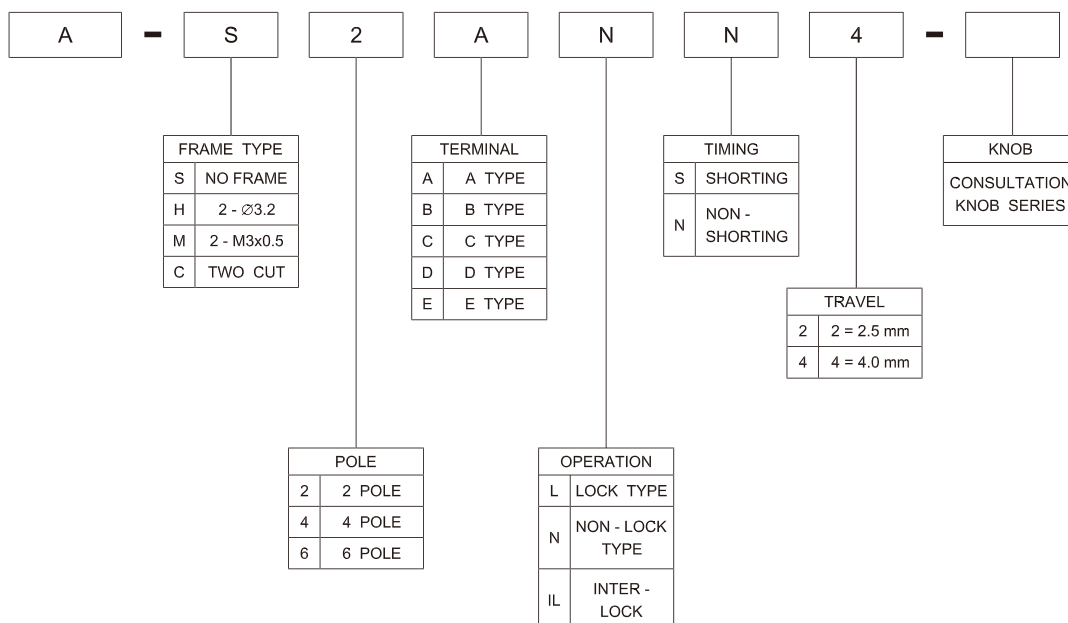
Applications

Various Switching purpose in all Home Electronic Equipment and Industrial Electronic Equipment

Specifications

SWITCH SPECIFICATIONS	
POLE - POSITION	2P2T , 4P2T , Momentary and Lock Type are available
CONTACT RATING	100 V AC ; 0.5 A ; 250 V AC , 0.2 A ; 25 V D , 1A
CONTACT RESISTANCE	40 mΩ max . 1.5 V DC ; 100 mA , by Method of Voltage DROP
INSULATION RESISTANCE	100 MΩ min . 500 V DC
DIELECTRIC STRENGTH	Breakdown is not Allowable ; 500 V AC for 1 Minute
OPERATING FORCE	2P2P - 250 ± 100gf 4P2T - 350 ± 100gf
OPERATING LIFE	10,000 cycles
OPERATING TEMPERATURE RANGE	-20°C ~ 70°C
TOTAL TRAVEL	LOCK TRAVEL - 4.0 (or 2.5) ± 0.3 mm TOTAL TRAVEL - 5.5 (or 3.5) ± 0.3 mm

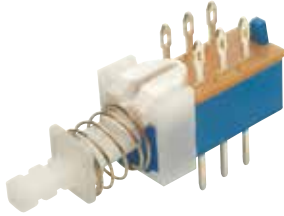
How To Order



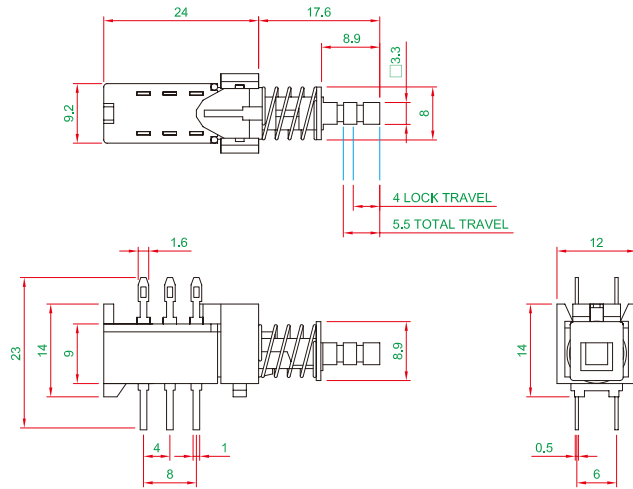


Push Button Switch A Series

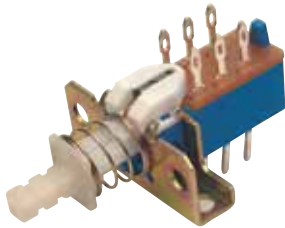
Dimension



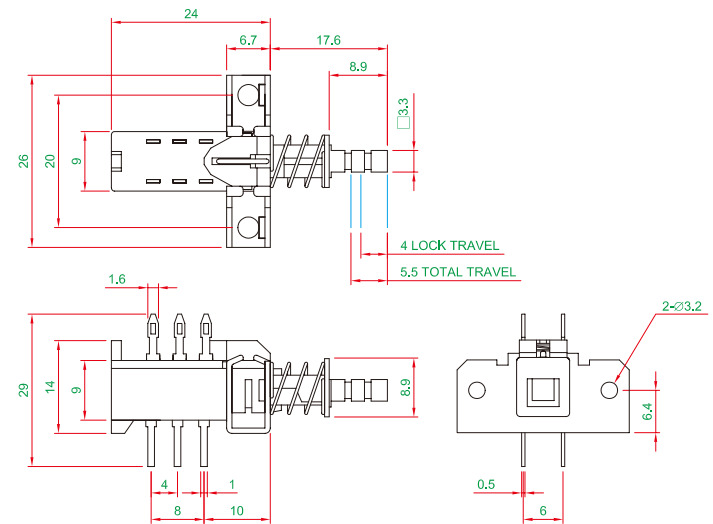
A - S2ANN4



Dimension

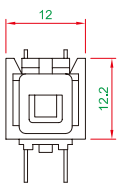


A - H2ALN4

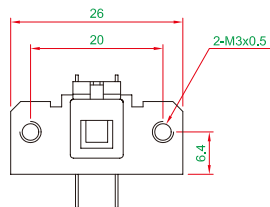


Frame Type

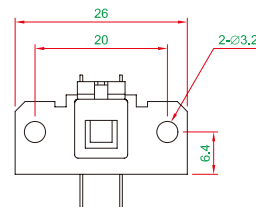
S TYPE



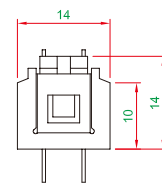
M TYPE



H TYPE

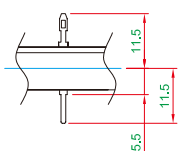


C TYPE

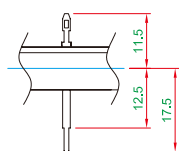


Terminal Type

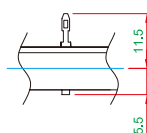
A



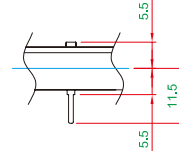
B



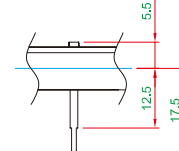
C



D



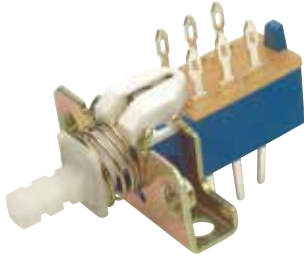
E



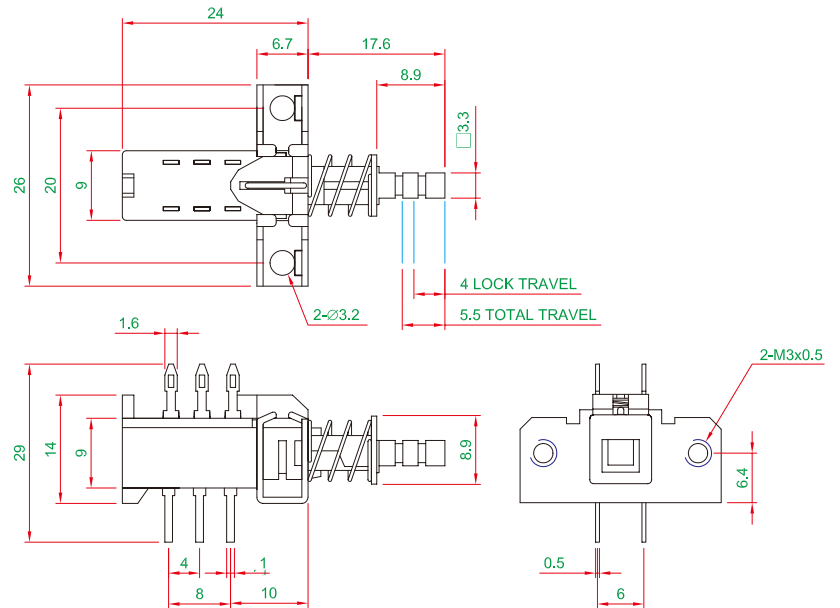


Push Button Switch A Series

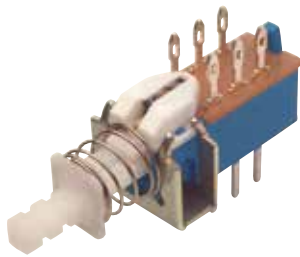
Dimension



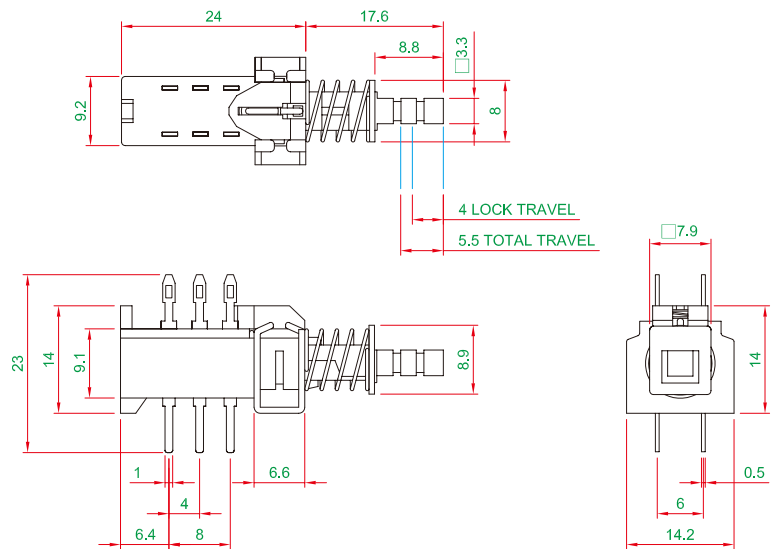
A - M2ALN4



Dimension



T - C2ALN4



Material

- ACTUATOR - POM
- TERMINAL - BRASS SILVER PLATING
- BASE FRAME - PBT + GF
- SPRING - STAINLESS STEEL

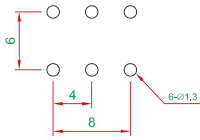
Unit Weight

- A - S2ANN4 : 4.25 ± 0.05 g / pcs
- A - H2ALN4 : 8.5 ± 0.05 g / pcs
- A - M2ALN4 : 6.6 ± 0.05 g / pcs
- A - C2ALN4 : 5.3 ± 0.05 g / pcs

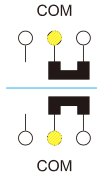


Push Button Switch A Series

P.C.B Layout



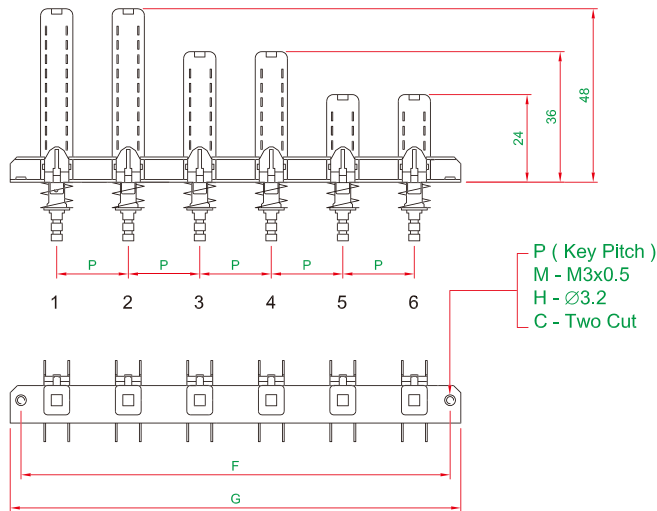
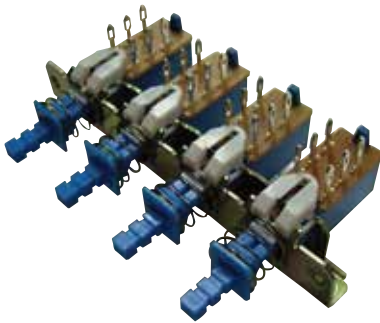
Schematic



Pole&Length

POLE	2	4	6
L(mm)	24	36	48

Inter-Lock&Length



SIZE PITCH	G		F		G		F		G		F		G		F	
10	26	20	46	40	66	60	86	80	106	100						
12.5	24	18	51	45	76	70	101	95	126	120						
15			56	50	86	80	116	110	146	140						
17.5			61	55	96	90	131	125	166	160						
20			66	60	106	100	146	140	186	180						
10	36	30	56	50	76	70	96	90	116	110						
12.5	38.5	32.5	63.5	57.5	88.5	82.5	113.5	107.5	138.5	132.5						
15	41	35	71	65	101	95	131	125	161	155						
17.5	43.5	37.5	78.5	72.5	113.5	107.5	148.5	142.5	183.5	177.5						
20	46	40	86	80	126	120	166	160	206	200						

Multi-Key Type

FRAME TYPE M M3x0.5 H Ø3.2 C TWO CUT

KEY	1	2	3	4	5	6	7	8	9	10	11	12	13	14	15	16
OPTION / 選項																
POLE / 回路數																
TERMINAL TYPE / 端子																
OPERATING / 動作																
TIMING N / S																
TRAVEL / 行程																
KNOB																
PITCH / 間距	<input type="checkbox"/> 10mm <input type="checkbox"/> 12.5mm <input type="checkbox"/> 15mm <input type="checkbox"/> 17.5mm <input type="checkbox"/> 20mm <input type="checkbox"/> 25mm <input type="checkbox"/> 30mm															